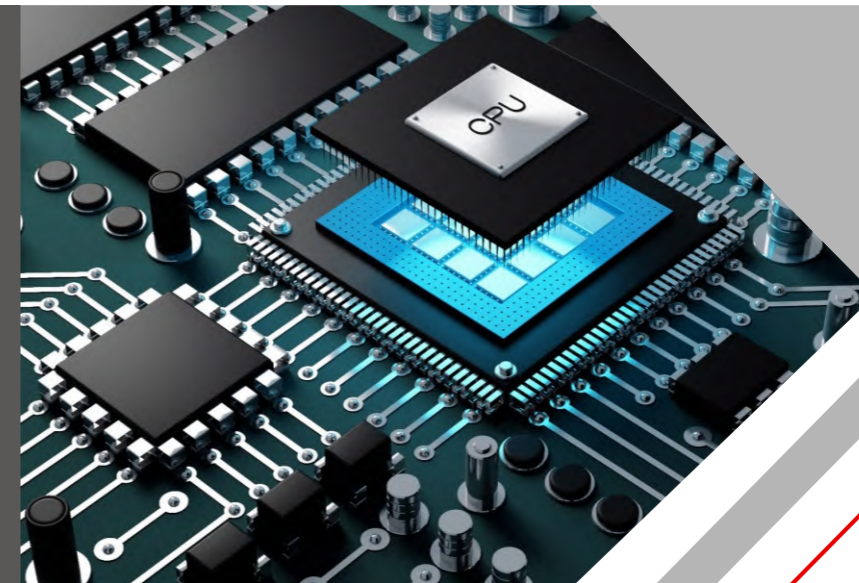


Manufactured For Better Cost Performance



FAROAD



SMT
EQUIPMENT
SOLUTION



www.compmaq.com.br

SHEN ZHEN · SINGAPORE · HONG KONG · SU ZHOU



Contents Directory

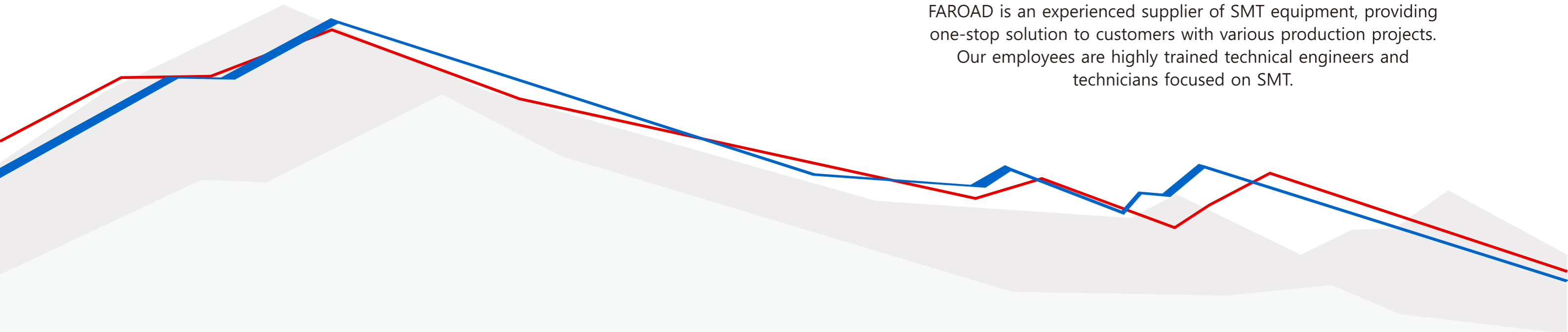
Business Background	04/07
Company Profile	08/09
Enterprise Culture	10/11
The Whole Line	12/15
The Product Field	16/17
Pick and Place Machine	18/23
Reflow Oven	24/29
Automatic Printer	30/31
Solder Paste Printer	32/33
Loader And Unloader	34/35
Buffer Conveyor	00/36
Workshop Display	37/39



BUSINESS BACKGROUND



FAROAD is an experienced supplier of SMT equipment, providing one-stop solution to customers with various production projects. Our employees are highly trained technical engineers and technicians focused on SMT.



TIME LINE

COMING TOGETHER IS A BEGINNING
KEEPING TOGETHER IS PROGRESS
WORKING TOGETHER IS SUCCESS

SET UP

The Corporation of FAROAD Intelligent Equipment was established in 2006
Mainly engaged in the import / export trading of high-precision placements and the peripherals.

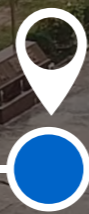
2006



AWARDS

Won a number of Independent Research and Development Patents
Won the High-Tech Enterprise Award and Most Outstanding Enterprise Award.

2009~2011



2006~2009

ACHIEVEMENT

FAROAD was awarded the National High-Tech Enterprise and became the pioneer in SMT Industry.



2012~2017

BREAKTHROUGH

Established the Silicon Valley Research Institute
Began to develop SMT machines independently
Developed the international market and products were sold internationally.

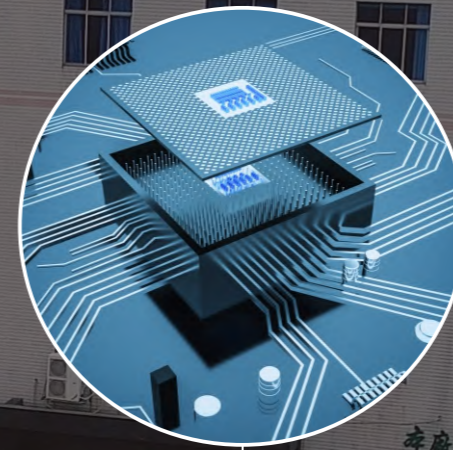


NEW JOURNEY

September 2018
Established FAROAD Suzhou with registered capital of RMB110 million and with total area of 24,000 square meter
Started developing High-End Mounter machine

March 2019
Established FAROAD Singapore office at Oxley Bizhub Singapore

2018~2019



FAROAD 廣發

ISO-9001:2008
ISO-14001:2004

COMPANY PROFILE

The Corporation of FAROAD Intelligent Equipment was established in 2006, which is mainly engaging in the import and export trade of High-precision placements and peripherals.

FAROAD has the capability of both Self-Research (R&D) and Manufacturing. We obtain a series of Inventions and Utility Patents under the Honor of National High-Tech Enterprise.

The primary Pick & Place machines of FAROAD are CPM-II, CPM-IIT, CPM-III and CPM-Tse. The peripherals includes the Loader, Unloader, Full/ Semi-Auto Solder Paste Printer, Buffer Conveyor, Reflow Oven, etc.

Moreover, the turnover of FAROAD reached approximately 500 million Yuan per year with the majority of customers in Asia, Africa and Europe regions.

The goal of FAROAD is to become the largest supplier for SMT Devices during the next 5 years and run the 4S operation concepts throughout the entire company. 4S means, a Reasonable Scientific Sales, a Superior Supply for the Original Accessories, a High-Efficiency After-Sales Service, and an Effective-Accuracy Survey.

The Corporation of FAROAD employs nearly 200 employees, whom 87 are highly competitive maintenance engineers for the pick and place machine and another 37 engineers responsible in developing the domestic pick and place machine.

Furthermore, in 2017, we setup an academy on the Silicon Valley where the staffs are currently striving to march towards the Industry 4.0 to achieve the goal, Made In China 2025.



深圳市路远自动化设备有限公司
深圳市路远智能装备有限公司

GLOBAL PRESENCE AND SERVICES

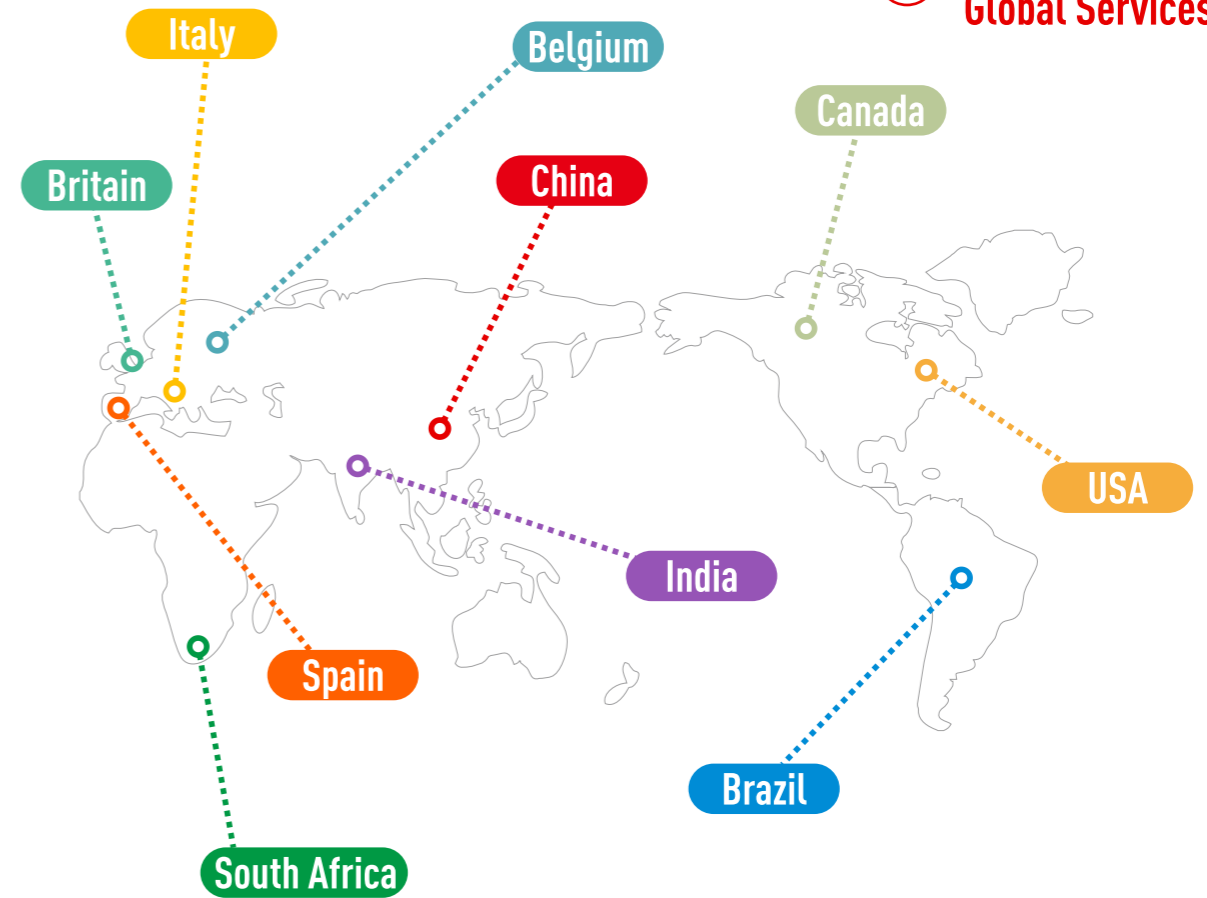
- SCIENTIFIC SALES
- ORIGINAL QUALITY PARTS SUPPLY
- HIGH-EFFICIENCY AFTER-SALES SERVICE
- EFFECTIVE-ACCURACY FEEDBACK



OUR ADVANTAGES

- 01 10+ years industry leader
- 02 One-stop sales platform
- 03 Multi-channel spare parts supply
- 04 High-Tech Enterprise
- 05 Efficient and Active After-Sales Team
- 06 Senior Overseas Engineers
- 07 ISO 14000 certified
- 08 Fast and Efficient Technical Support

International Products Global Services



Our products are sold all over the world

CUSTOMERS DISPLAY



FULL LINE SOLUTION

• For the one-stop SMT solution, customers only need one reliable contact to handle their installation and after service, more efficient and more cost-saving. Professional and reliable SMT solution is able to meet your various SMT productions and PCBA requirements. One-stop solution ensures one-stop service with high efficiency.

LINE CAPACITY: 20000CPH

SMT WHOLE LINE PRESENTATION



1. Standard SMT Line for Small Production

• This SMT line is mainly consisted of semi-auto solder paste printer, multi-function pick and place machine and six zones reflow oven, which is suitable for the beginner company and small production site.

• We will offer you a cost-effective full/semi auto SMT assembly line solutions for start up SMT factory. Suitable for LED light, LED strip, consumer products like mouse, Keyboard and other home electronic products production.

LINE CAPACITY:55000CPH

SMT WHOLE LINE PRESENTATION



2.Middle volume SMT Production Line

• The middle volume production is supported by the full-automated SMT line. In this line, we offer the double-sides pick and place machine with more feeder capacity. Besides, full-auto printer and 8 zones reflow oven also guarantee the higher production volume.

• The SMT line consists of specially selected equipment, including a solder paste printer, at least one SMT machine, a reflow soldering oven and advanced AOI inspection equipment. Together, these machines allow us to install up to 20,000 chips per hour with extremely high precision.

LINE CAPACITY:85000CPH

SMT WHOLE LINE PRESENTATION



3.High-volume SMT Production Line

• High speed SMT assembly line with one CPM-II and one CPM-III, the production speed can reach to 45000 CPH, it is fast for LED light production as well as various household appliances. High speed SMT line also can improve production turn around times while increasing accuracy and offering more flexible solutions.

• The SMT line is fully automatic, boards are carried by conveyor through the entire assembly process. Multi-functional pick & place machine combined with high speed placement equipment is capable of placing 50,000 components per hour! The full screen printer ensures the automatic and stable printing. The 8-stage reflow oven, with upper and lower heating zones, assures an optimal solder connection.

PRODUCT APPLICATION FIELD

Home appliance⁺ industry



Pick and Place machine plays a vital role in the manufacturing of consumer electronics or home electronics intended for everyday use, including TVs, DVD players, video games, remote control cars, washing machines, etc.



+ Automotive electronics industry

Automotive electronics are electronic systems used in vehicles, including engine management, radio, telematics, in-car entertainment systems and others, also including transmission electronics.



+ LED lighting industry

LED lighting products including tube lights, LED panels, strip lights, and various street light with the feature of energy saving and cost-effective have been accepted by the market. Faroad LED assembly pick and place machine will help you to get the position in this increasing industry.

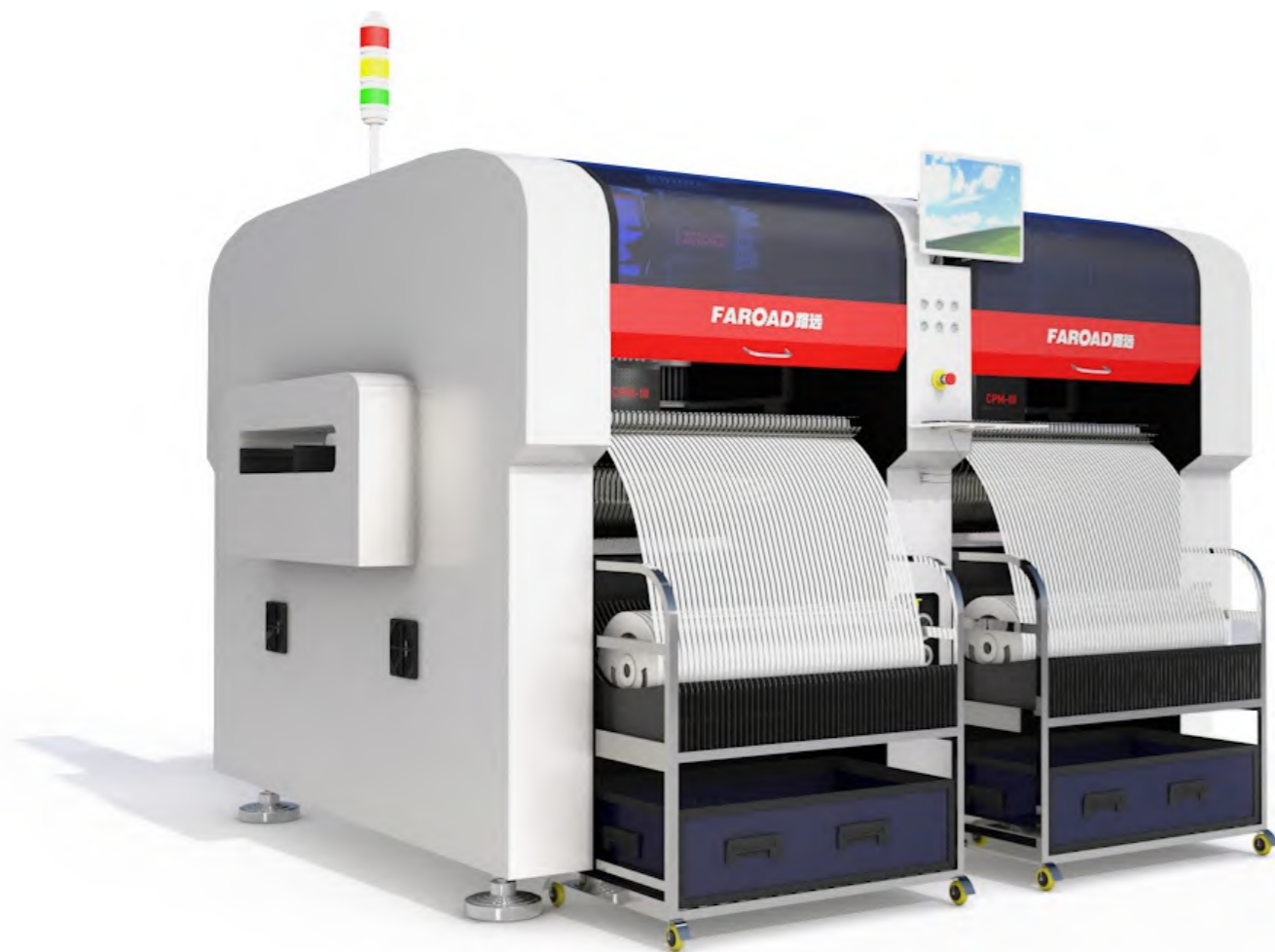


+ Smart home industry

Intelligent home is applied to intelligent home control system, including intelligent home appliances control, intelligent lighting control, electric curtain control, burglar alarm, access control, gas leakage, etc., at the same time can also expand such as three table cc, video vod and other value-added services.

PICK AND PLACE MACHINE

PRODUCT DISPLAY



Multi-functional
pick and place machine



High Speed
pick and place machine



Lens
pick and place machine

Faroad insists in using the high-end brand hardware to continuously provide the stable & reliable performance for our end users.

PRODUCT FEATURES

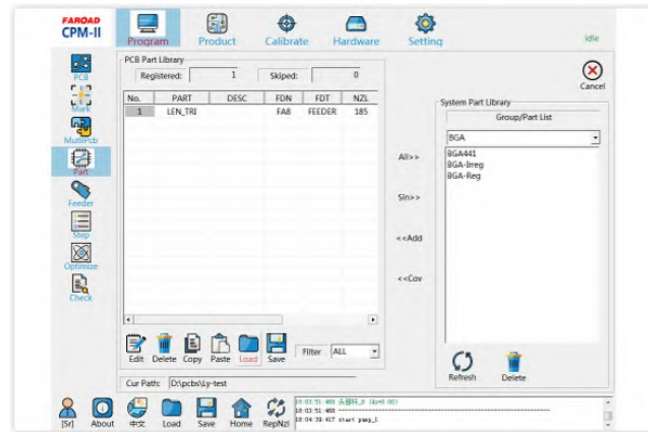
- Equipped with Japanese Sanyo linear motor owning higher accuracy and lower abrasion.
- Advanced Germany industrial linear scanning camera can achieve high-precision recognition of the component without mistiming and stopping.
- High accuracy thermal compensation system can monitor the placement precision in real time and modify the placement automatically.
- Nozzles exchanged automatically ensures various components can be compatible.
- Using electric feeder ensures the higher accuracy of feeding process, solving the component dumping caused by unstable situation.
- Fast switching between Chinese and English interface is more suitable for the international market.
- Self-developed high end vibratory feeding system with 8 feeding channels. (CPM-II T)
- Applicable to other PCB components not only in Lens. (CPM-II T)

Part	Country	Brand
X/Y Axis Linear Motor	Japan	Sanyo
X/Y Axis Rail Guider	Japan	THK
Grating Ruler/Encoder	UK	Renishaw
Linear Camera	Germany	Basler
Pneumatic Part	Japan	SMC
Electric Part	Germany	Schneider
Z Axis Component	Japan	IKO

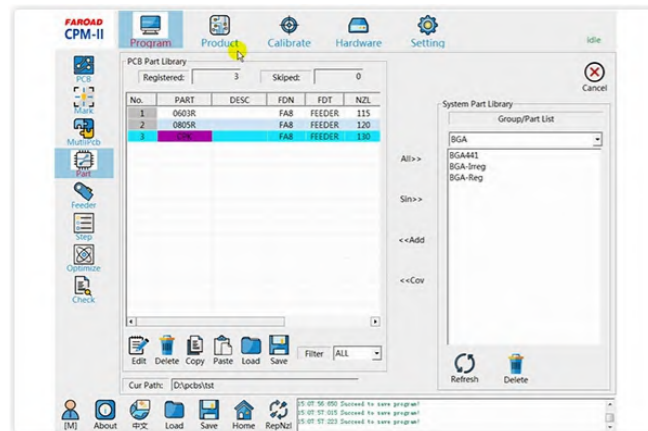
Provides an easy to use graphical user interface and efficient programming functions to manage high volume and complex production.



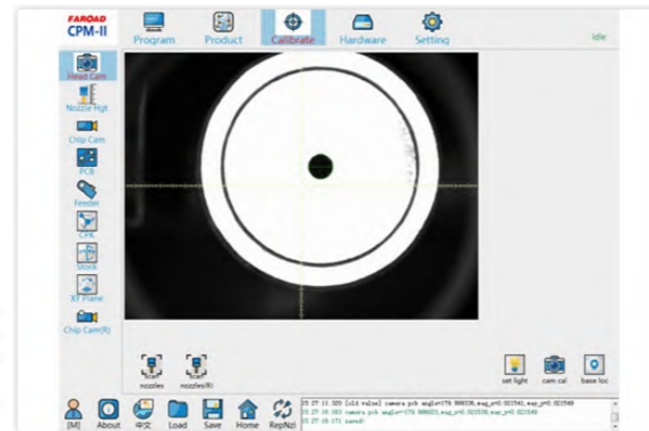
1. User-friendly, intuitive, easy-to-learn software design.
2. Off-line programming capability for setting up new SMT assembly programs or modifying existing SMT assembly programs.



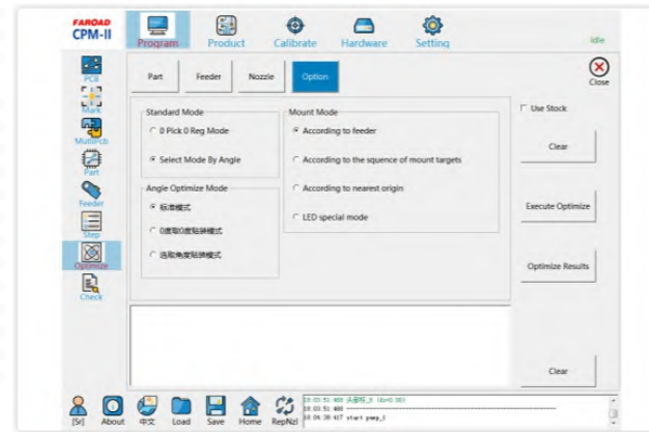
5. Able to support automatic nozzle change for increasing the efficiency.
6. Provides high-quality programming functions to reduce total programming time with system part library.



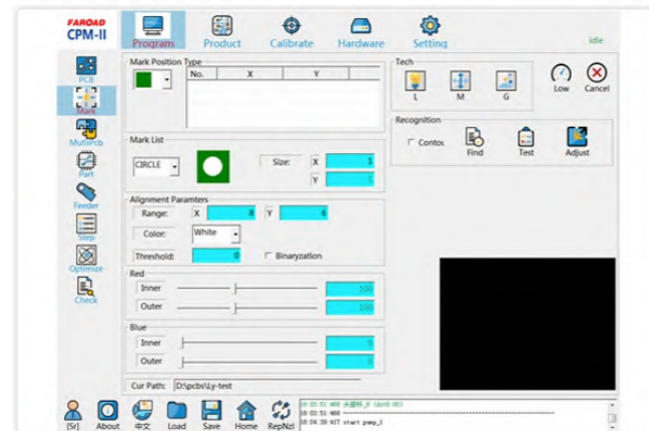
- 9.1 Automatic component measurement: the data of various type components can be programmed easily by the operator via just inputting approximate dimension, type and packaging information.
- 9.2 Components automatic teaching function: Various common components like BGAs and QFPs can be taught automatically by machine software in an easy and fast way.



3. Software can work on different MS Windows environment, such as win. 7 and win.10.
4. Simple calibration system is easy for the beginner to operate.

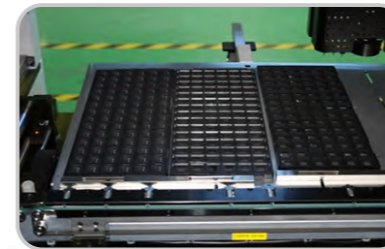


7. Different optimization methods ensure to achieve mass and complex production.
8. Specific software design for LED chips mounting.



- 9.3 Perspicuous component data program guideline ensures that beginners also can make the data for the odd-shape components easily via step-by-step instruction in the guideline.
- 9.4 MES (Manufacturing Execution Software) provides comprehensive capabilities for tracing electrical manufacturing process, including production schedule and statistics, machine status, as well as quality traceability.

Faroad insists in using the high-end brand hardware part to continuously provide the stable & reliable performance for our end users.



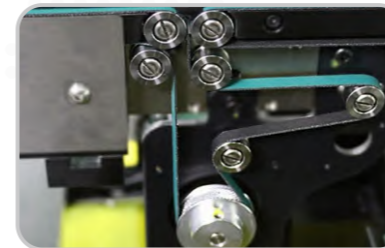
1.Strong and Flexible feeder Capability

- Double feeder bases are optional for Faroad Pick & Place Machine total can equipped with 84 slots (8mm feeder) to meet a wide variety of components production.
- Supporting the use of tray plate and vibration feeder.
- Automatic IC box with 20-pieces tray plate capability.



4.Reliable Machine Movement Control System:

- Independent drive panel for each Z axis movement, which offers long-life usage and easier maintenance for the machine.
- Japanese Sanyo linear motor used on X/Y axis is exclusively used in Pick & Place machine, ensuring the high machine performance.
- Renishaw grating ruler on both X-axis and Y axis enhances high-precision position feedback and provides class-leading accuracy with low jitter, excellent signal stability



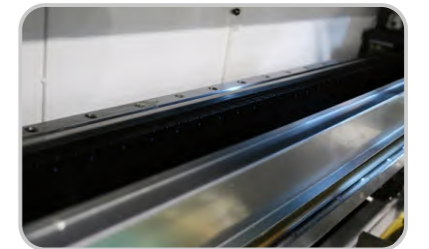
5.Conveyor system

- Top and bottom and side on plywood method which is very flexible and can be adjusted side to side to avoid the components at the board edge, ensuring the accuracy and stability.
- Conveyor extension is available, the machine can support 1.2 M board.



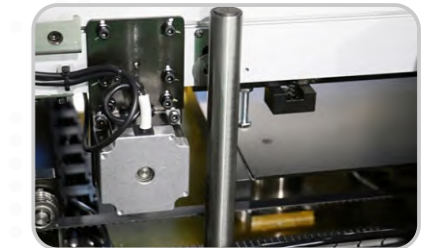
2.High-quality Visual System

- Professional linear scanning camera from Germany brand Basler, it is shock- resistance and guarantees high-quality component recognition.
- The Ring-shaped light source is made by OSRAM lamp beads that has highlight and high-stability, and lighting comes from its base and 8 sides.



3.High-precision Movement System

- IKO guide rail ensures the up-down of Z-axis in high-speed, high-accuracy, and high stability.
- High-precision IKO ball spline ensures the high-accuracy of R-axis rotation.
- THK guide rail on both X and Y axis realizes the high-precision, high-rigidity, energy-saving, high-speed machines with long service lives.

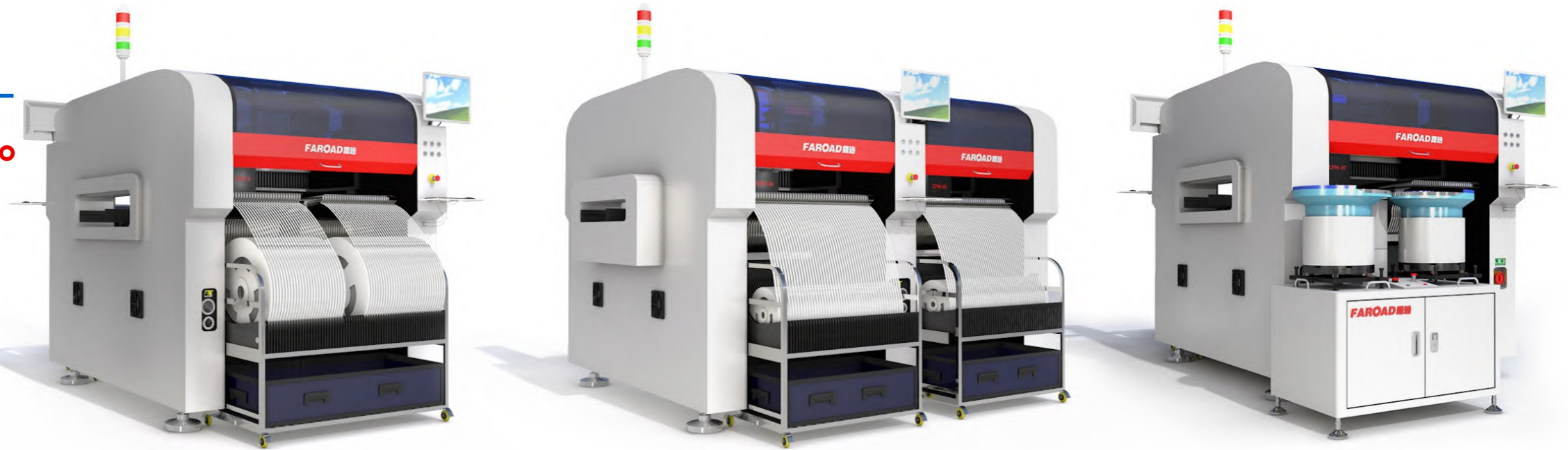


6.High-Precision Calibration System

- The high-accuracy calibration on the placement head, combined with the machine software, which is able to provide excellent but simple calibration process.

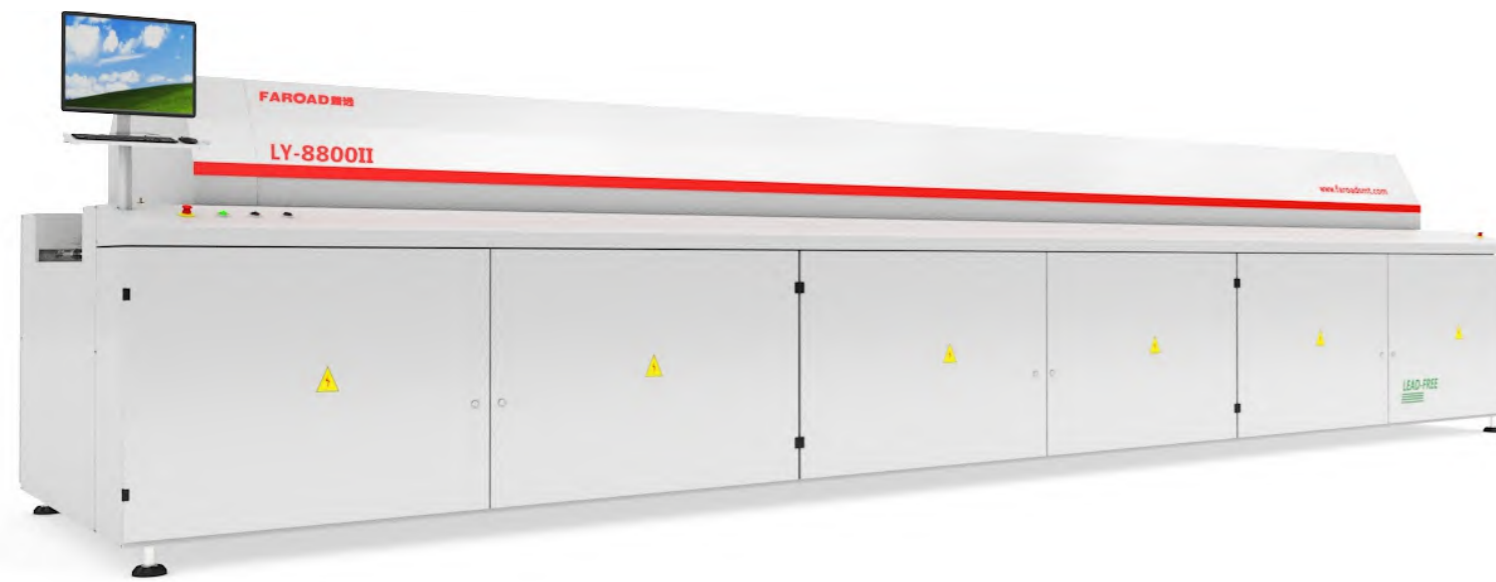
PRODUCT PARAMETERS

• We can provide full line SMT products and SMT peripheral equipment , we strive to be customer-oriented to achieve the lowest budget, the highest production efficiency of the full line .



Model	CPM-II Multi-Functional Pick and Place Machine	CPM-III High Speed Pick and Place Machine	CPM-II T Lens Pick and Place Machine
Placement speed	28000CPH* ¹	50000CPH* ¹	20000CPH* ¹
Placement accuracy	±0.05mm		
Lens size			5~30mm
Board size	min 50mm x50mm max 410mm x1200mm (option)	minmum 50mm x50mm maximum 410mm x450mm	minmum 50mm x50mm maximum1200mm x410mm
Board thickness	0.4~5.0mm		
Board weight	Max 4KG		
PCB transmission mechanism	Three phases		
Component type	42categories(maximum/converted to 8mm volume)	76 categories(maximum/converted to 8mm volume)	
Spindle quantity	8	16	8
Feeder capacity	42 slots one side, 84 slots two sides (option)	76 slots one side, 152 slots two sides	Bow Feeder(8Lanes)+16 slots/58 slots
Feeder specification	8mm~56mm		
Applicable component	From the tiny chip of 0201 to the large component of 40mm with various of resistors and capacitors,LC ,BGA etc.		
Power	AC 380 / 420 /480V /		
Air source	0.5~0.8Mpa		
Control system	Windows 7 control platform of the Chinese and English interface		
Machine size	L1380mm x W1800mm x H1550mm	L2850mm x W1880mm x H1450mm	L1980mm x W2350mm x H1550mm
Weight	1850KG	2890KG	2050KG
Alignment	Scanning for centering		
Clamp Way	Side-on,top and bottom		

REFLOW OVEN



PRODUCT DISPLAY



SIX-ZONES
reflow oven

EIGHT-ZONES
reflow oven

TEN-ZONES
reflow oven

PRODUCT FEATURES

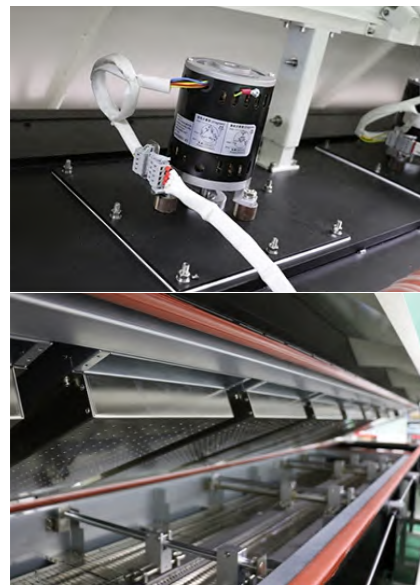
- Unbeatable price-performance ratio
- Inline integration with matching interfaces
- Good performance with the less production cost
- Low costs of ownership with high process reliability
- Compact machine technology for small and medium-sized production plan
- Heating zones with full hot air convection, ensuring perfect soldering results
- Flux management system at both ends of the oven ensures minimum maintenance requirements

Faroad insists in using the high-end brand hardware to continuously provide the stable & reliable performance for our end users.

Part	Country	Brand
PLC	Germany	SIEMENS
Frequency converter	Germany	SCHNEIDER
Solid-state relay	Switzerland	CARLO GAVAZZI
Switching power supply	Taiwan, China	MEAN WELL
Brake staff	Germany	SIBRE
Blower Motor	USA	A. O. SMITH

HARDWARE FEATURES

- Board drop detection
- Uninterruptible power supply
- Guaranteed Lead Free process
- Automatic edge rail lubrication system
- 320°C high temperature processing capabilities
- Combination pin chain and mesh belt conveyors (Standard)
- Light tower
- Board counter
- Motorized width adjust
- Smema communication
- Comprehensive warranty
- Windows 7 Operation interface

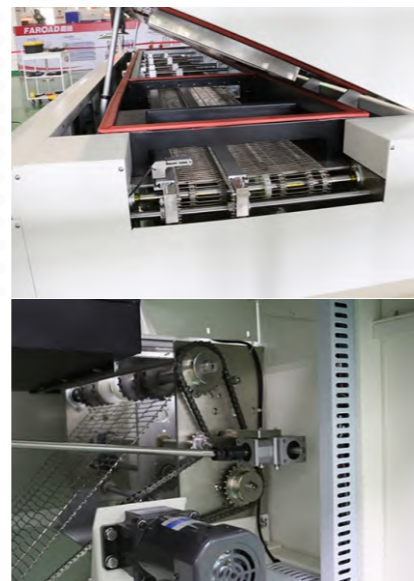


1. Excellent thermal convection system

- 1.1 Efficient power design and heat management system greatly improves energy savings while lowering carbon emissions.
- 1.2 150W high quality hot air motor, large wind wheel and high-efficiency heating pipe, which is easy to maintain and can reduce power consumption.
- 1.3 SUS304 nozzle plate is anti-corrosion and easy to maintain, also it allows to cover the boards independent of component size or color with hot air in all direction for good uniformity.
- 1.4 320 °C high temperature processing capabilities, allowing the heating zone temperature controllers have an accuracy of ± 1 °C, also ensuring a ΔT of ± 1 °C across the PCB assembly.

2. Reliable conveyor system

- 2.1 The guide rail is made from special aluminium alloy whose surface was treated by oxidation and has the super hard film, which is hard to be deformed and corroded.
- 2.2 The guide rail adapts two-phases design, which increases the bending strength and deformation-resistance ability.
- 2.3 Special width adjustment and transmission structure design ensure the reliable PCB transmission.
- 2.4 Both hand and electric width adjustment, also emergent hand transmission control is available which can avoid that the PCB is burn in the oven when the machine stops suddenly.
- 2.5 Auto chain lubrication system can reduce high levels of friction that can result in chain wear, high energy consumption and unplanned production stops.



OPTIONAL

- Nitrogen
- Central Support
- Customization Max. width
- Dual lane conveyor with independent speed control

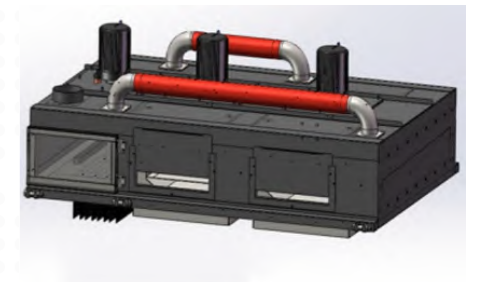
Analysis of thermal compensation capacity



Our products are of level 1 performance

3. Powerful cooling zone

- 3.1 Cooling zone is achieved with 2 top and bottom zones (8 zones reflow oven as an example) allowing adjustable convection speed for desired cooling slope.
- 3.2 Except air cooling system, water chiller cooling system is optional.



4. Flux collection system

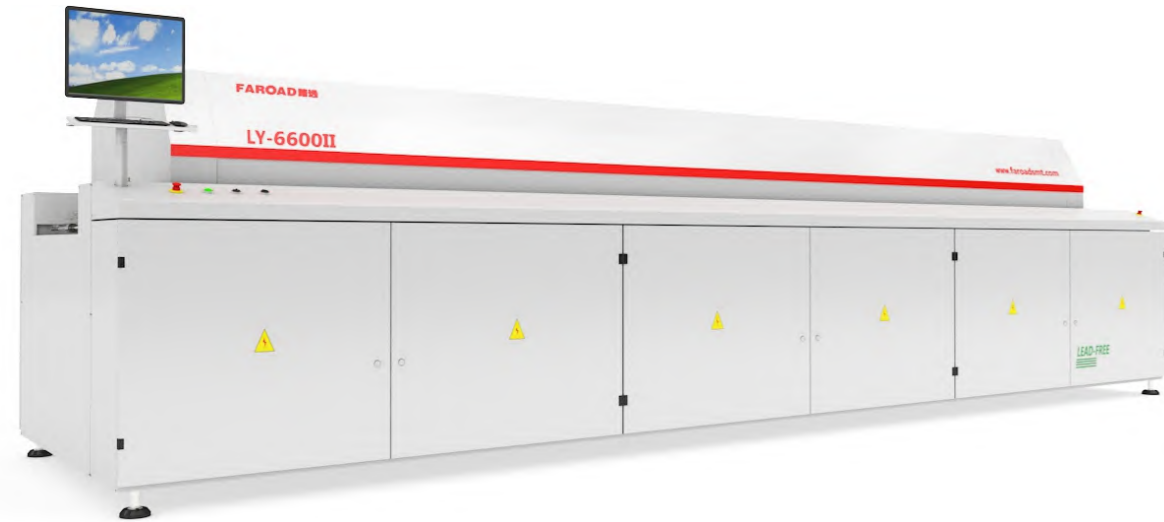
- 4.1 Multi-stage flux filtration collects flux vapors from the reflow zone ensuring the high-efficiency process.
- 4.2 Online maintenance without stopping the machine.
- 4.3 Flux is trapped in a separate collection box with easy to remove plates. As a result, the oven tunnel is kept clean - thus saving the clearance time.
- 4.4 Efficient flux collection system at both front-back end exhausts are installed with quick release metallic filters similar with the heat exchanger for less and easy maintenance. (optional)

5. Machine control system

- 5.1 PC+PLC electricity control system guarantees the stable machine running.
- 5.2 Windows operation system, 2000/XP/win7 is available.
- 5.3 Built-in temperature curve, temperatures can be recorded directly on the board and displayed on the machine's LCD display.
- 5.4 E-version equipment maintenance manual is available in the machine PC.



PRODUCT PARAMETERS



MODEL	LY-6600II
General	
Dimension(L*W*H)	3800*1300*1400
Weight	1300Kg
Number Of Heating Zones	Top 6 /Bottom 6
Length Of Heting Zones	2100MM
Heating Method	Micro Circulation
Number Of Cooling Zones	1(Inside)
Length Of Cooling Zones	500MM
Cooling Method	Natural Air Cooling
Standard Color	Computer white
Exhaust Volume	10M ³ /min x2(channel)
Standrd Features Of Converyor System	
Conveyor Direction	Left → Right(Option:Right → Left)
Conveyor Width	400MM
Range Of Rail Width	50~400MM
Conveyor Height	900±20MM
Conveyor Speed Range	300~1800mm/min
Standard Features Of Control System	
Temperature Deviation on PCB	±2°
Temperature Control Precision	±1°
Temperature Setting Range	60° between the fifth and sixth zones,other zones for 40°
Temperature Control Method	Indoor Temperature~350°
Power Supply	PID +SSR
Power For Warm Up	36KW
Power Consumption	6KW
Power Protection	Overheating warning



MODEL	LY-8800II	LY-1000II	LY-8800D	LY-1000D
The Parameter of Heating Zone				
No.of Heating Zones	Top 8/Bottom 8	Top 10/Bottom 10	Top 8/Bottom 8	Top 10/Bottom 10
Length of Heating Zones	3110 mm	3892 mm	3110 mm	3892 mm
No. of Cooling Zones	Up 2 (The interior-circulation of cold air)			
Exhaust Volume	10M ³ /minx2 (Channel)			
The Parameter of Conveyor				
Max.Width of PCB	400 mm (Option:450 mm)		250x2 (Single Channel 50~450mm)	
Direction of Conveyor	Left → Right (Option: Right → Left)			
Conveyor Rail Fixed	Front Rail Fixed(option:rear rail fixed)		Front and Rear Rails Fixed, Two Adjustable Rails At Center	
Conveyor Height	900±20 MM			
PCB Transmission Agent	Chain+Mesh (Option:Chain+Central Support; Single-row chain)			
PCB Board Height	Top 30 mm/Bottom 25 mm			
Conveyor Speed	300~2000 mm/min			
The Parameter of Control				
Power	3Phase,380V50/60HZ (Option;3,220V50/60Hz)			
Startup Power	30KW	36KW	32KW	38KW
Power Consumption	10KW	11KW	11KW	12KW
Warming Time	Approx: 30min		Approx: 35min	
Temp-Control Range	Indoor temp -300°C			
Temp-Control Mode	PID Full-closed loop control, SSR Driving			
Temp-Control Accuracy	±1°C			
PCB Temp-Deviation	±1.5°C			
Parameter Storage	Could Stone Multiple parametes			
Abnormal Alarm	Abnormal (Extra-high Temp Or Extra-low Temp After Constant Temp)			
Signal Tower	Three Lights			
The Parameter of Machine				
Outside Dimension	5378x1320 x1490mm	6160X1320 X1490mm	5378x1539 x1490mm	6160X1539 x1490mm
Weight	Approx: 2300Kg	Approx: 2615Kg	Approx: 2645Kg	Approx: 3050Kg
Color	Computer grey (Depend on the assigned color within technological agreement)			
Commutated Element	Galvanized Plate			
The Option				
Dual-Lane Transmission	Dual Lane with the letter D,1.3 Or 1.4 fixed, Max.width PCB 300x300mm			

Full Automatic Solder Paste Printer



PRODUCT FEATURES

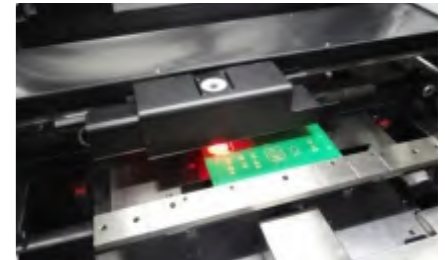
- Graphical English/Chinese interface makes it easy to use.
- Qualified for 2D solder paste inspection and SPC analysis.
- Specialized high-rigidity UVW and modular drive mechanism combined with the inverted triangle adjustment platform of Z axis lifting guarantees the automatic height adjustment of PCB and PIN with different thickness.
- Automatic cleaning system: The device is equipped with high-power blower and Venturi vacuum generator. It can be programmed to use the dry, wet or vacuum cleaning.
- The brand new optical system: uniform ring-light, high-brightness coaxial light source together with the infinite adjustment of the brightness assures the well recognition of various-types Mark points.

PARAMETERS AND HARDWARE

Basic Board Size (XY)	Max 450mmx350mm Min 50mmx50mm
PCB Thickness	0.6mm~14mm
Warpage	Max.PCB Diagonal line 1%
Maximum Board Weight	10Kg
Transfer Speed	1500mm/s(Max)
Transfer Mode	One phase rail
Template Frame Size	370mm x 470mm~737mm x 737mm
Maximum Printing Area(X*Y)	450mmx350mm
Squeegee Type	Steel/Glue/(angle45°/55°/60°matching the printing process)
Demoulding Length	0.2mm~12mm
Platform Adjustment Range	X,Y:±7.0mm,θ:±2.0°
Camera System	Independent camera upwards/downwards imaging vision system,geometric matching location.
Repetition Precision Of Image Calibration	±12.5μm (±0.0005") @6σ,Cp≥2.0
Cycle Time	<7s
Power Requirements	AC220V±10%,50/60HZ,15A
Machine Dimension	L(1140mm)xW(1400mm)xH(1480mm)
Machine Weight	About 1000Kg

1. Visual system

● Advanced up/down visual system, independent controllable and adjusted lighting, high speed mobile camera lens, precisely alignment for the PCB and template and make sure that the printing accuracy is ±0.025mm.

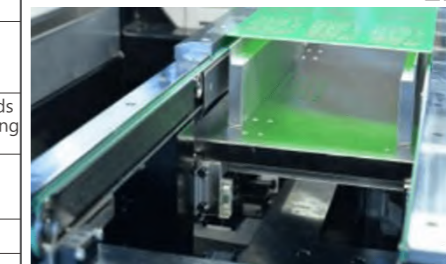


● Four-way light source adjustment, with uniform illumination and the perfect image collection, making the various types of mark points can be a very good identification (including the rugged mark point), to meet the tin, gold-plated, spray tin, FPC, and other types of different colors of the PCB.

2. Multi-functional PCB handling device

● There is a multifunctional device to deal with boards. The device can automatically positioning and pick up various size and thickness PCB boards. It has mobile magnetic thimble, vacuum platform and vacuum chamber, which can avoid board deformation effectively and make sure the even of printing.

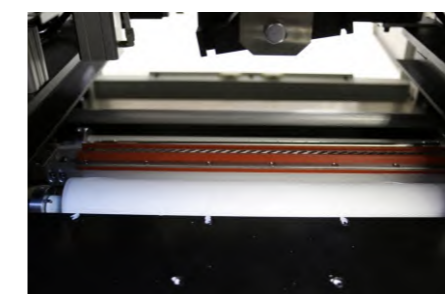
● Simple and reliable PCB positioning system: Adaptive PCB board thickness, software tunable flexible side pressure and magnetic supporting device.



3. Intelligent scraper system

● Suspended printing head which is designed specially in high rigid structure. The scraper pressure, speed and movement are controlled by the computer, which can maintain the even and stability of the printing. Besides, the structure of scraper beam is light and well-formed.

- Sound and light alarm function. It can indicate the reason of the fault.
- Can deal with the PCB base board no matter it is single side or double side.
- Programmable and independent direct-coupled stepper motor control, Built-in precision pressure control system.



4. High-efficiency stencil cleaning system

● The bottom of the board can be cleaned by manual or automatically. The clean function for the bottom of board is automatic and no need any assists. It can be programmed to control the dry, wet or vacuum cleaning. The cleaning time interval can be free to set. It can clean all the solder paste inside the board holes and guarantee the high quality printing.

● The new wiping system ensures full contact with the stencil, and the increased vacuum suction ensures that the solder paste remaining in the mesh is effectively removed, and the effective automatic cleaning function is achieved.

SEMI-AUTO SOLDER PASTE PRINTER



LY-30120
Semi-auto Solder Paste Printer

LY-3070
Semi-auto Solder Paste Printer

LY-3050
Semi-auto Solder Paste Printer

PRODUCT FEATURES

- The entire machine is under the control of PLC and employs a touch screen that is embedded an interactive interface, and is armed with a Ivory inverter as well as Panasonic motor to manage the movement, which offers a stable performance and simple operation.
- The first company in the world uses the unique method which their printing table declines from top to bottom during the demold process, presenting the same performance as imported full-auto screen printer.
- Dramatically emphasize the stability of device and its printing accuracy by employing 4 imported rails.
- Adopting the creative switch with dual security buttons to ensure the operator safety.



- Printing the solder paste to the pad of individual components with low-cost and proven processes will lay a foundation for an electrically functional product in just a few steps.
- The semi-automatic stencil printer can suitable to the largest of the range. It can handle oversized PCBs such as 1.2M and 1.5M in length.

PARAMETER SPECIFICATION

Model	LY-3050	LY-3070	LY-30120
Print-table Area	320*500mm(W-L)	320*700mm(W-L)	320*1250mm(W-L)
Board Size	max 300*500mm	max 300*700mm	max 320*1250mm
Board Thickness	0.2~5.0mm		
Print-Position fixed	exterior/reference pin		
Platen Adjustment	before/after±10mm left/right ±10mm		
Print Accuracy	±0.02mm		
Repeat Accuracy	±0.02mm		
Air pressure	0.4~0.6Mpa		
Power	1φAC 220V 50/60HZ		
Shape Dimension	900*900*1650(L*W*H)	1150*900*1650(L*W*H)	2010*900*1650(L*W*H)

LOADER UNLOADER

PARAMETERS AND HARDWARE

- Total 50 pieces PCB capacity.
- Selectable pitch settings.
- Regulated pressure on pneumatic pusher.



- Embedded LED touch screen for easier operation.
- Electrical and automatical conveyor width adjustment.
- Equipped with towerlight to show the machine running status.



Loader

Unloader

PRODUCT FEATURES

- Specialized aluminium guide rail and plastic roller chain
- Taiwan-made 90w step motor driver adopts the ball screw to control the rise and down of magazines.
- Automatic magazine change-over.
- Pneumatic clamping structure.
- Mitsubishi PLC programmable.
- With one set of 0.7m conveyor belt.
- User-friendly "soft touch" LED membrane control panel.

This loader is manufactured by high-quality, CE-approved components from our global suppliers such as Omron and Panasonic, which has the same high reliability and advanced features as those made by better-known manufacturers, but with less cost.

PARAMETER SPECIFICATION

Model	Loader	Unloader
Parameter		
Transport Direction	L-R/R-L	
Pitch Distance	10,20,30,40mm	
Magazine Size	L355*W320*565mm	
Max PCB Size	L330*W250	
Transport Height	H=920±30	
Magazine Capacity	50PCS	
Power	220V 50HZ	
Air Source	0.4-0.6Mpa	
Machine Dimension	L1100*W780*H1200±30mm	L1700*W780*H1200±30mm

BUFFER CONVEYOR



Standard SMEMA interface



Electric Adjustment

PRODUCT FEATURES

- Controlled by Chip board
- Manual conveyor width adjustment, electrical adjustment is optional.from 0mm 400mm
- Imported power system for speed-regulation dual motors
- Can connect with various SMT machines
- Standard length is 500mm, 1000mm and 1200mm, customized length is available.
- Transmission Direction:Left → Right or Right → Left
- Fixed edges can be changed



