



UNICOMP



compmaq

SOLUÇÕES INDUSTRIAIS

www.compmaq.com.br



Unicomp Technology

A Leader in the Intelligent X-Ray
Inspection Equipment

AX8200MAX

X-Ray Inspection Equipment



AX8200MAX



Unicomp Technology

Widely applied for BGA , CSP , Flip Chip, LED , Fuse, Diode, PCB, Semiconductor, Battery Industry, Small Metal Casting, Electronic Connector Module, Cables, Aerospace Components, Photovoltaic Industry, etc.

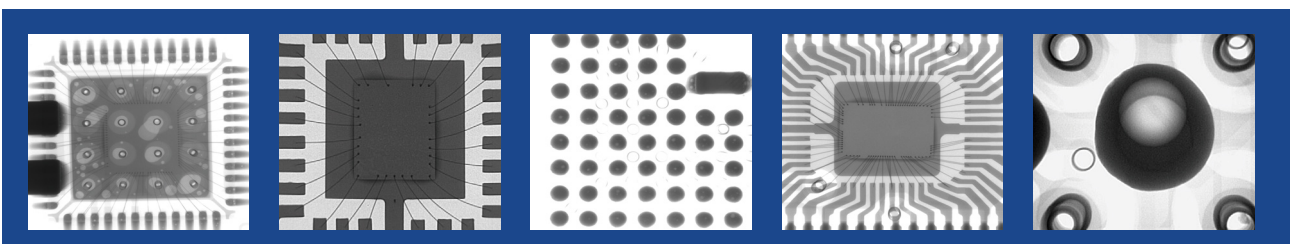
Application Fields



Functions and Features



Inspection Images





A Leader in the Intelligent X-Ray Inspection Equipment

Technical Parameters and Specifications

System Summary

Footprint	1280(W)×1500(D)×1705(H)mm	Plywood Packing Size	175(W)×155(D)×200(H)cm
Machine Weight	1400 kg	Packing Weight	1500 kg
Power Supply	AC 110~220V, 50/60Hz	Power Consumption	1.0 kW

X-Ray Tube

Tube Type	Sealed	Max. Power	8W
Voltage	0~90kV (Adjustable)	Focus Spot Size	5µm

Imaging System

Detector	Flat Panel Detector (FPD)	Pixel Size	85µm
Effective Detection Area	130*130mm	Frame Rates	20fps
Pixel Matrix	1536*1536	System Magnification	600X

Software

Auto-measuring	BGA Soldering Voids Auto-measuring and Support Data/Graphic Output
Multiple Measuring Tools	Support Measuring Distance, Angle, Diameter, Polygon, PTH filling rate, etc.
CNC Mode	CNC Programmable Inspection, Easy Operation and User Friendly
Real-time Display	Real-time Displaying the Working Data of Voltage, Current, Angle, Date, etc
Navigation	Convenient Target Point Positioning System

Motion Control System

Movement Control	Joystick, Keypad, Mouse & Touch Panel
Max. Loading Area/Weight	610*610mm / 10kg
Max. Inspection Area	550*550mm
Oblique Views	Max. 60°
Manipulator	6-axis with X / Y / Z1 / Z2 / T1 / T2

Industrial PC

Monitor	24" FHD Interactive Touch LCD Display
System OS	Windows 10 64bit
Hard disk	1TB
RAM	8GB
CPU model	Intel i7 Processor

Other Features

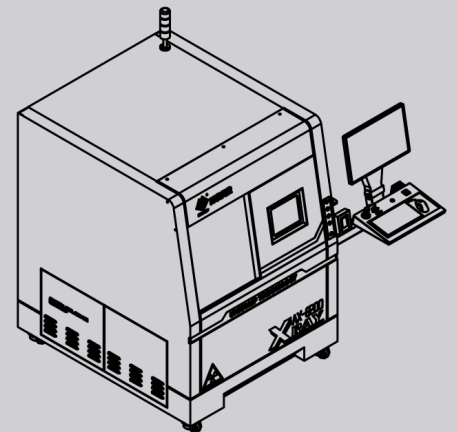
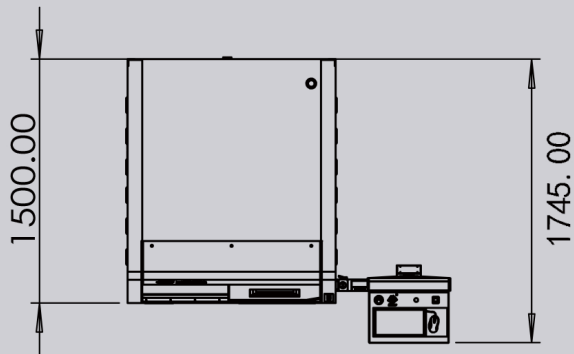
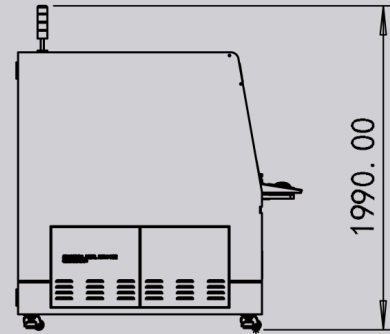
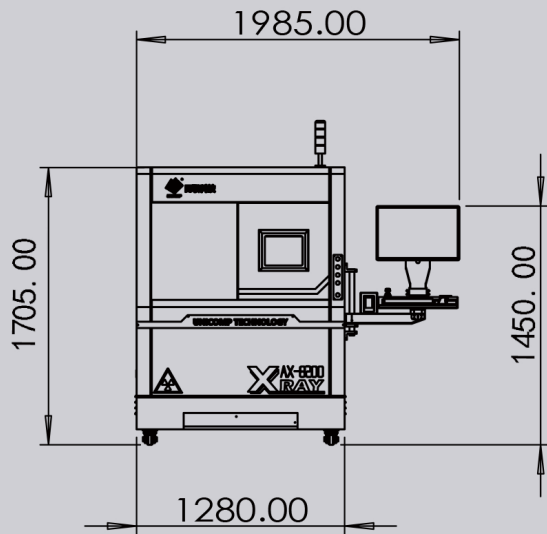
Door Open	Electric Sliding	X-Ray Safety	<1µSv/h (Meets All International Standards)
Authority Management	Fingerprint Access Management System, and Support Password Accessing.	Safety Operation	Electromagnetic Interlock, Warning Light and Real-time Radiation Leakage Monitor

* Specifications are subject to change without notice, All trademarks are the property of the system maker.

Dimensions and Appearance



Scan the QR-Code to visit more information





Unicomp Technology

A Leader in the Intelligent X-Ray
Inspection Equipment

AX8200

X-Ray Inspection Equipment



AX8200



Unicomp Technology

Widely applied for BGA , CSP , Flip Chip, LED , Fuse, Diode, PCB, Semiconductor, Battery Industry, Small Metal Casting, Electronic Connector Module, Cables, Aerospace Components, Photovoltaic Industry, etc.

Application Fields



Functions and Features



Inspection Images





A Leader in the Intelligent X-Ray Inspection Equipment

Technical Parameters and Specifications

System Summary

Footprint	1080(W)×1180(D)×1730(H)mm	Plywood Packing Size	146(W)×128(D)×196(H)cm
Machine Weight	1050 kg	Packing Weight	1160 kg
Power Supply	AC 110~220V, 50/60Hz	Power Consumption	1.0 kW

X-Ray Tube

Tube Type	Sealed	Max. Power	8W
Voltage	0~90kV (Adjustable)	Focus Spot Size	5µm

Imaging System

Detector	Flat Panel Detector (option 4" i.i. Detector)	Pixel Size	85µm
Effective Inspection Area	130*130mm	Frame Rates	20fps
Pixel Matrix	1536*1536	System Magnification	600X

Software

Auto-measuring	BGA Soldering Voids Auto-measuring and Support Data/Graphic Output
Multiple Measuring Tools	Support Measuring Distance, Angle, Diameter, Polygon, PTH filling rate, etc.
CNC Mode	CNC Programmable Inspection, Easy Operation and User Friendly
Real-time Display	Real-time Displaying the Working Data of Voltage, Current, Angle, Date, etc
Navigation	Laser Locator for Precise Location

Motion Control System

Movement Control	Joystick, Keypad & Mouse
Max. Loading Area/Weight	510*420mm /10kg
Max. Inspection Area	435*385mm
Oblique Views	Max. ±60°
Manipulator	5-axis with X / Y / Z1 / Z2 / T

Industrial PC

Monitor	22" FHD LCD Display
System OS	Windows 10 64bit
Hard disk	1TB
RAM	8GB
CPU model	Intel i7 Processor

Other Features

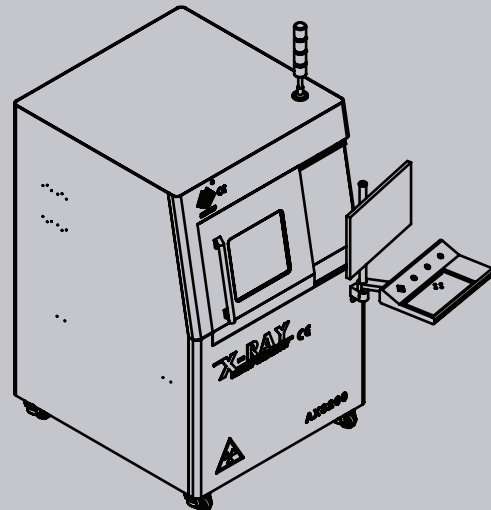
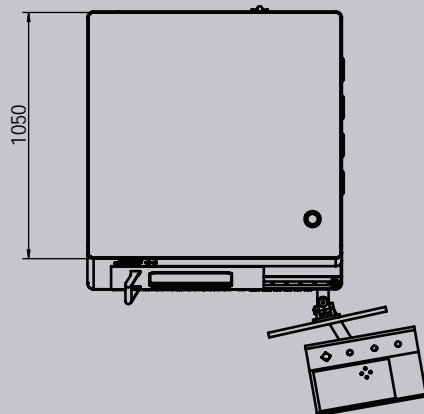
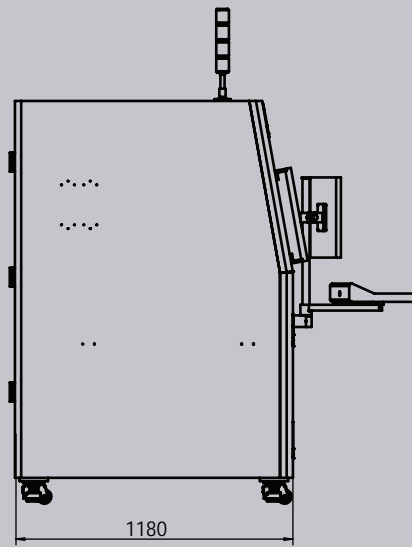
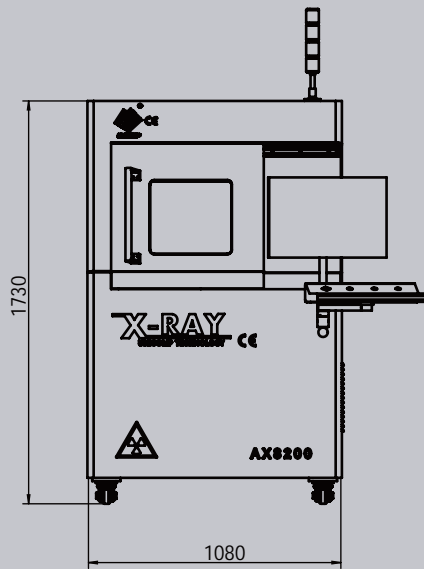
Energy Saving	X-Ray Auto-off when it's out of work over than 5 minutes	Safety Operation	Electromagnetic Interlock and warning Light
Portable Design	Mounted with Wheels on Machine Bottom	X-Ray Safety	<1µSv/h (Meets All International Standards)

* Specifications are subject to change without notice, All trademarks are the property of the system maker.

Dimensions and Appearance



Scan the QR-Code to visit more information





Unicomp Technology

A Leader in the Intelligent X-Ray
Inspection Equipment

AX7900

X-Ray Inspection Equipment



AX7900



Unicomp Technology

Widely applied for BGA , CSP , Flip Chip, LED , Fuse, Diode, PCB, Semiconductor, Battery Industry, Small Metal Casting, Electronic Connector Module, Cables, Aerospace Components, Photovoltaic Industry, etc.

Application Fields



Functions and Features



Inspection Images





A Leader in the Intelligent X-Ray Inspection Equipment

Technical Parameters and Specifications

System Summary

Footprint	1100(W)×1100(D)×1500(H)mm	Plywood Packing Size	135(W)×135(D)×180(H)cm
Machine Weight	1100 kg	Packing Weight	1300 kg
Power Supply	AC 110~220V, 50/60Hz	Power Consumption	1.0 kW

X-Ray Tube

Tube Type	Sealed	Max. Power	8W
Voltage	0~90kV (Adjustable)	Focus Spot Size	5µm

Imaging System

Detector	Flat Panel Detector (FPD)	Pixel Size	85µm
Effective Detection Area	65*65mm	Frame Rates	40fps
Pixel Matrix	768*768	System Magnification	600X

Software

Auto-measuring	BGA Soldering Voids Auto-measuring and Support Data/Graphic Output
Multiple Measuring Tools	Support Measuring Distance, Angle, Diameter, Polygon, PTH filling rate, etc.
CNC Mode	CNC Programmable Inspection, Easy Operation and User Friendly
Real-time Display	Real-time Displaying the Working Data of Voltage, Current, Angle, Date, etc
Navigation	Convenient Target Point Positioning System

Motion Control System

Movement Control	Joystick, Keypad & Mouse
Max. Loading Area/Weight	520*420mm / 5kg
Max. Inspection Area	460*400mm
Tilting Angle	±360°
Manipulator	5-axis with X / Y / Z1 / Z2 / T

Industrial PC

Monitor	24" FHD LCD Display
System OS	Windows 10 64bit
Hard disk	1TB
RAM	8GB
CPU model	Intel i7 Processor

Other Features

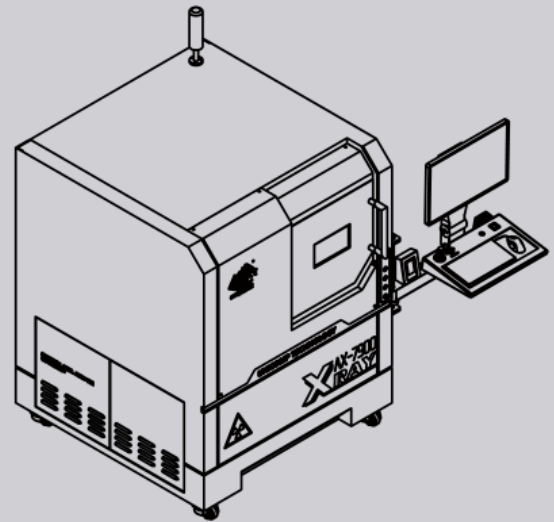
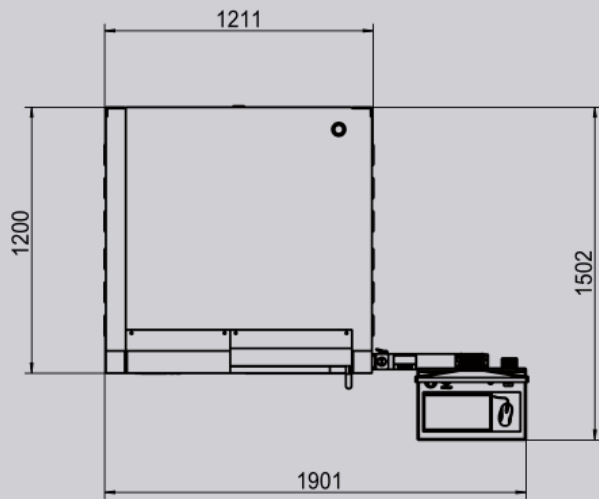
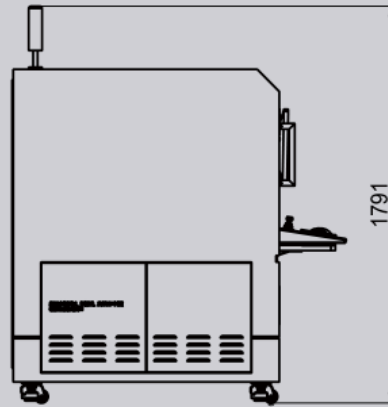
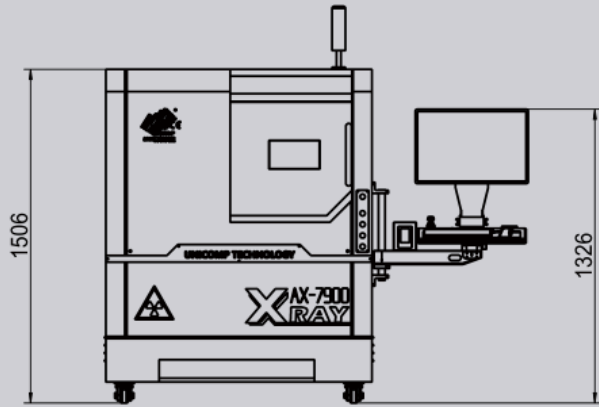
Energy Saving	X-Ray Auto-off when it's out of work over than 5 minutes	X-Ray Safety	<1µSv/h (Meets All International Standards)
Authority Management	Fingerprint Access Management System, and Support Password Accessing.	Safety Operation	Electromagnetic Interlock, Warning Light and Real-time Radiation Leakage Monitor

* Specifications are subject to change without notice, All trademarks are the property of the system maker.

Dimensions and Appearance



Scan the QR-Code to visit more information



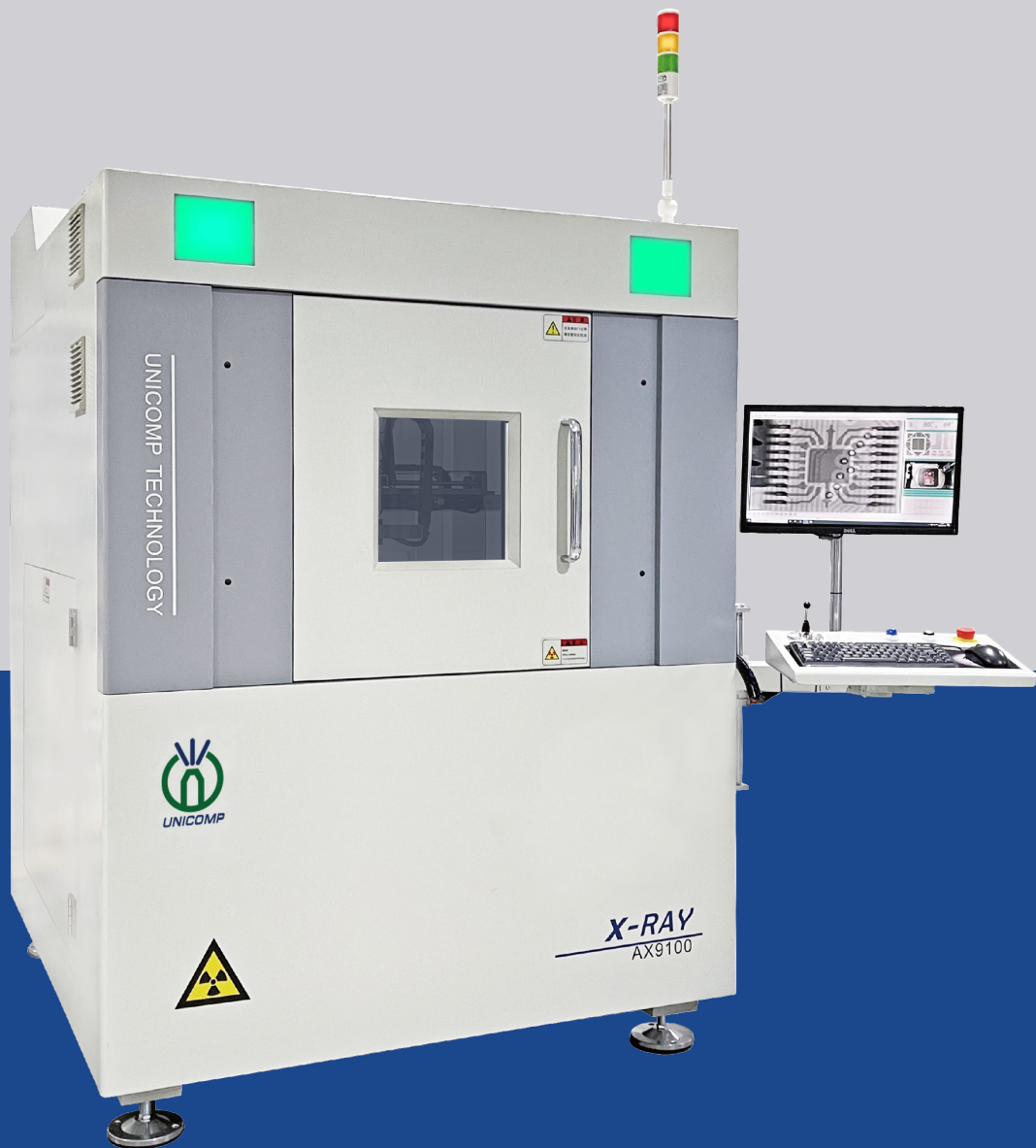


Unicomp Technology

A Leader in the Intelligent X-Ray
Inspection Equipment

AX9100

X-Ray Inspection Equipment



AX9100



Unicomp Technology

Widely applied for BGA , CSP , Flip Chip, LED , Fuse, Diode, PCB, Semiconductor, Battery Industry, Small Metal Casting, Electronic Connector Module, Cables, Aerospace Components, Photovoltaic Industry, etc.

Application Fields

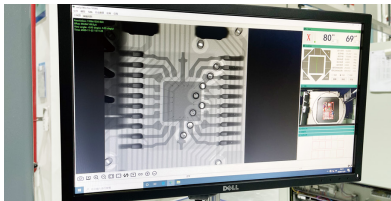


Functions and Features

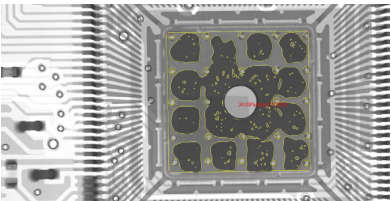
1 Large Size Inspection Table with 360° rotation Laser Locator for Precise Location



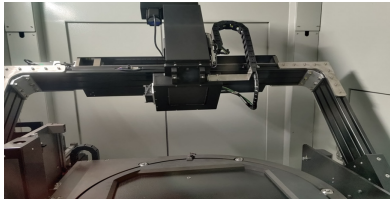
2 Big Magnification (1600X)



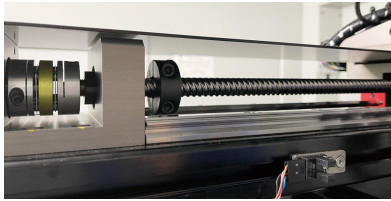
3 Accurate Control, CNC Programming Automatic Positioning



4 FPD 55° Tilting Inspection



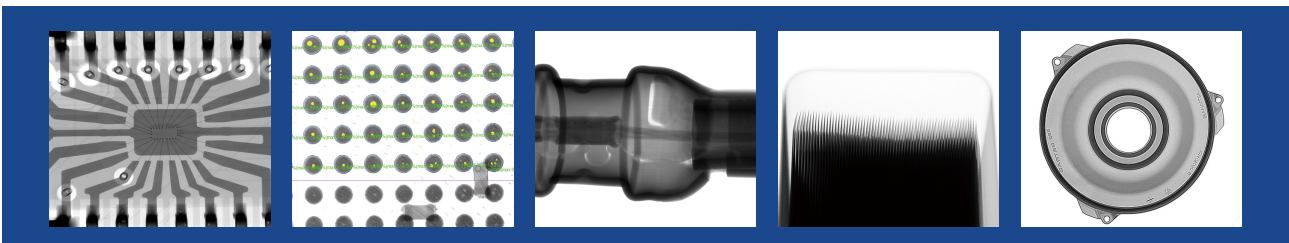
5 7-Axis Movement



6 Adjustable Console



Inspection Images





A Leader in the Intelligent X-Ray Inspection Equipment

Technical Parameters and Specifications

System Summary

Footprint	1420(W)×1580(D)×2000(H)mm	Plywood Packing Size	165(W)×180(D)×225(H)cm
Machine Weight	2640 kg	Packing Weight	2800 kg
Power Supply	AC 110~220V, 50/60Hz	Power Consumption	3.0 kW

X-Ray Tube

Tube Type	Sealed	Max. Power	40W
Voltage	0~130kV (Adjustable)	Focus Spot Size	<7μm

Imaging System

Detector	Flat Panel Detector (FPD)	Pixel Size	85μm
Effective Detection Area	130*130mm	Frame Rates	20fps
Pixel Matrix	1536*1536	System Magnification	1600X

Software

Auto-measuring	BGA Soldering Voids Auto-measuring and Support Data/Graphic Output
Multiple Measuring Tools	Support Measuring Distance, Angle, Diameter, Polygon, PTH filling rate, etc.
CNC Mode	CNC Programmable Inspection, Easy Operation and User Friendly
Real-time Display	Real-time Displaying the Working Data of Voltage, Current, Angle, Date, etc
Navigation	Convenient Target Point Positioning System

Motion Control System

Movement Control	Joystick, Keypad & Mouse
Max. Loading Area/Weight	Φ570mm / 10kg
Max. Inspection Area	450*450mm
Oblique Views	Max. 55° Tilting (FPD) / 360° Rotation (Table)
Manipulator	7-axis with X1 / X2 / Y / Z1 / Z2 / T (55°) / R (360°)

Industrial PC

Monitor	22" FHD LCD Display
System OS	Windows 10 64bit
Hard disk	1TB
RAM	8GB
CPU model	Intel i7 Processor

Other Features

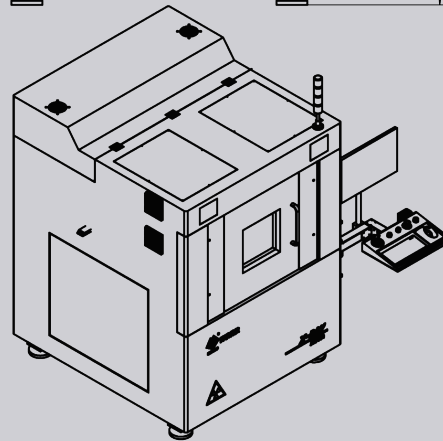
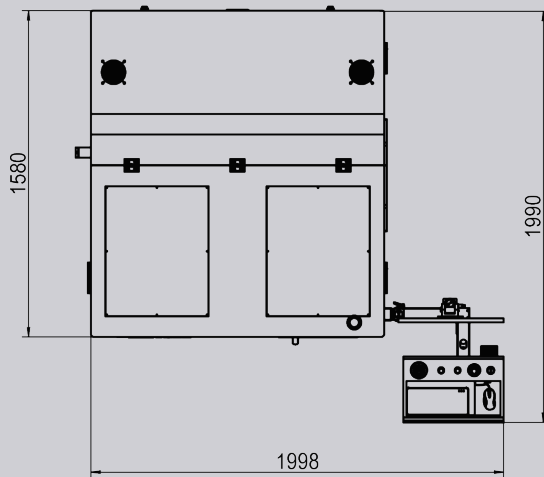
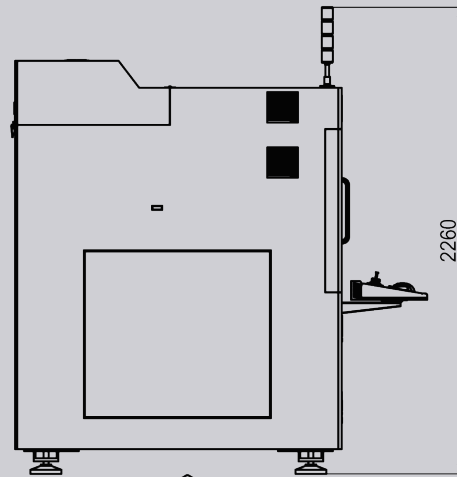
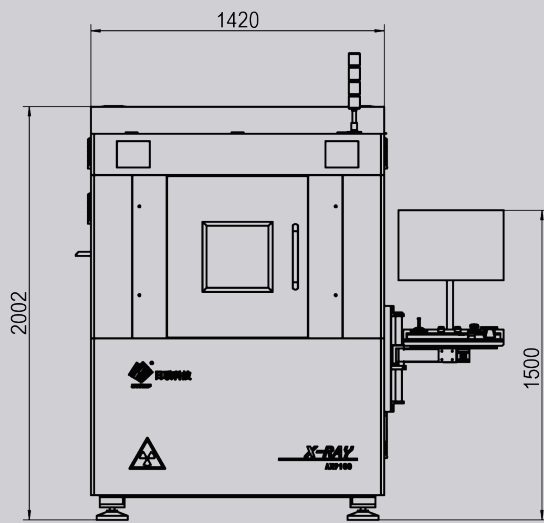
Energy Saving	X-Ray Auto-off when it's out of work over than 5 minutes	Safety Operation	Electromagnetic Interlock, Warning Light
Authority Management	Password Management	X-Ray Safety	<1μSv/h (Meets All International Standards)

* Specifications are subject to change without notice, All trademarks are the property of the system maker.

Dimensions and Appearance



Scan the QR-Code to visit more information





Unicomp Technology

A Leader in the Intelligent X-Ray
Inspection Equipment

LX2000

Inline X-Ray Inspection Equipment



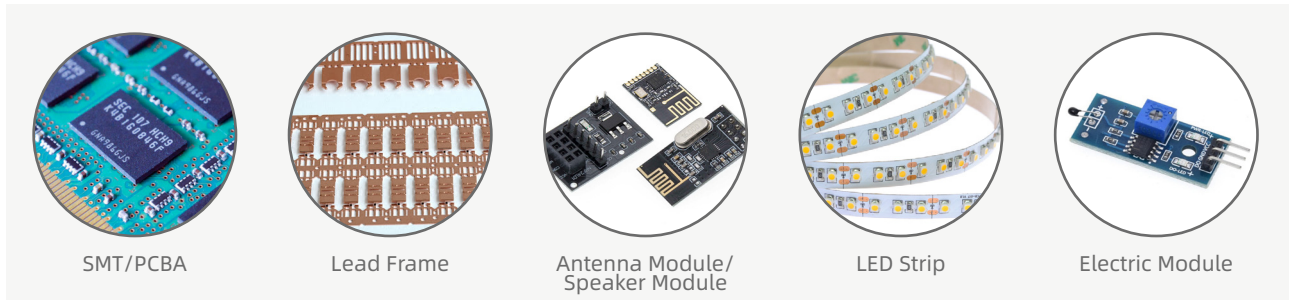
LX2000



Unicomp Technology

Widely applied for BGA , CSP , Flip Chip, LED , Fuse, Diode, PCB, Semiconductor, Battery Industry, Small Metal Casting, Electronic Connector Module, Cables, Aerospace Components, Photovoltaic Industry, etc.

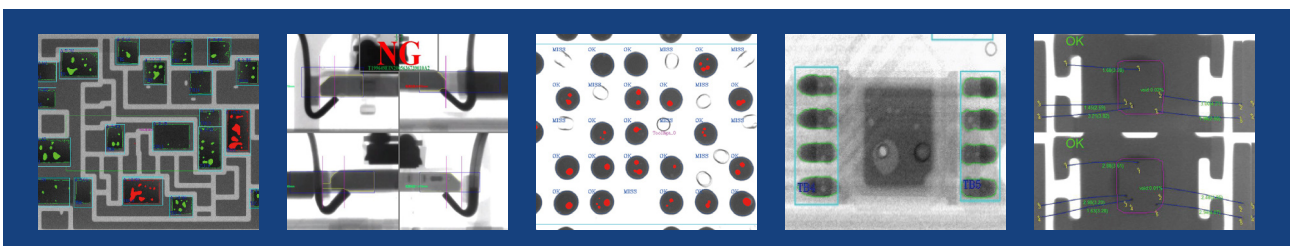
Application Fields



Functions and Features

- 1 Auto Mapping**
- 2 Auto Detecting and Analysing for Ok & NG Components**
- 3 Accurate Control, CNC Programming Automatic Positioning**
- 4 Rework Database Management system**
- 5 Support MES / ERP / SPC**
- 6 Automatic Labeling Scanning**

Inspection Images





A Leader in the Intelligent X-Ray Inspection Equipment

Technical Parameters and Specifications

System Summary

Footprint	2595(W)×1392(D)×1992(H)mm	Plywood Packing Size	180(W)×170(D)×190(H)cm (X-Ray) 150(W)×105(D)×120(H)cm (Conveyor)
Machine Weight	1900 kg (X-Ray) / 700kg (Conveyor)	Packing Weight	2000kg (X-Ray) / 800kg (Conveyor)
Power Supply	AC 110~220V, 50/60Hz	Power Consumption	3.5 kW

X-Ray Tube

Tube Type	Sealed	Max. Power	8W
Voltage	0~90kV (Adjustable)	Focus Spot Size	5μm

Imaging System

Detector	Flat Panel Detector (FPD)	Pixel Size	85μm
Effective Detection Area	130*130mm	Frame Rates	20fps
Pixel Matrix	1536*1536	System Magnification	200X

Software

Auto-measuring	Auto Inspection and Analysing for Ok & NG Components
CNC Mode	CNC Programmable Inspection, Easy Operation and User Friendly
Rework	Support Rework Database Management System
Data Connection	Support MES/ERP/SPC System
Navigation	Convenient Target Point Positioning System

Motion Control System

Movement Control	Joystick, Keypad, Mouse & Touch Panel (PLC)
Adjustable Tunnel width	80~350mm
Max. Inspection Sample	400*350mm / 10kg
Min . Inspection Sample	100*80mm
Manipulator	Auto Inline System

Industrial PC

Monitor	22" FHD LCD Display
System OS	Windows 10 64bit
Hard disk	1TB
RAM	8GB
CPU model	Intel i7 Processor

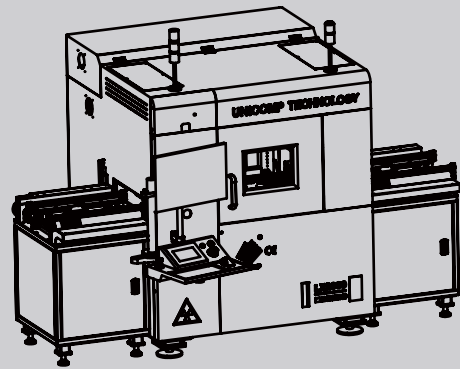
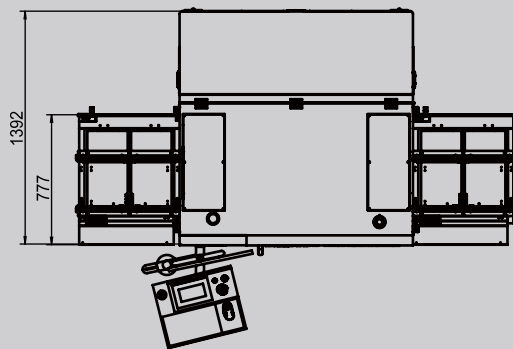
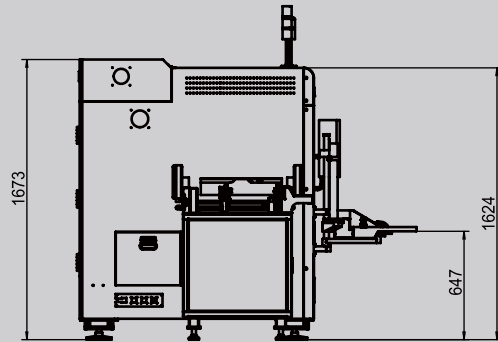
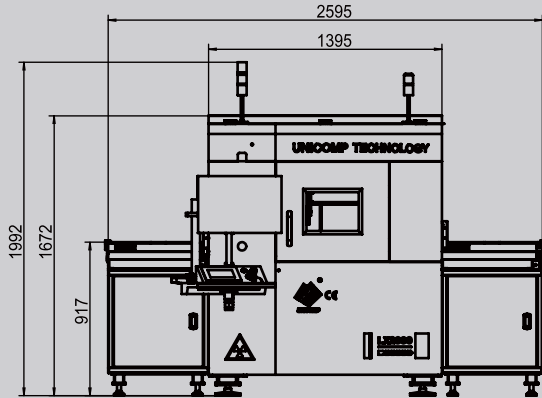
Other Features

Energy Saving	X-Ray Auto-off when it's out of work over than 5 minutes	Safety Operation	Electromagnetic Interlock, Warning Light
Authority Management	Password Management	X-Ray Safety	<1μSv/h (Meets All International Standards)

Dimensions and Appearance



Scan the QR-Code to visit more information





Unicomp Technology

A Leader in the Intelligent X-Ray
Inspection Equipment

CX3000

X-Ray Inspection Equipment



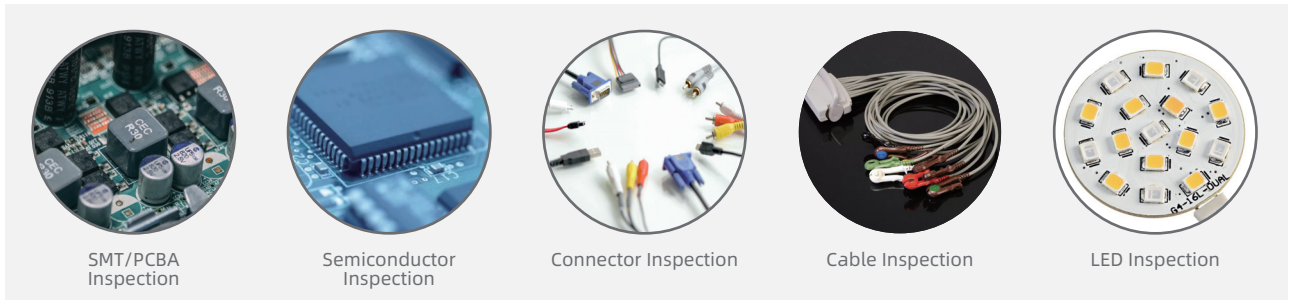
CX3000



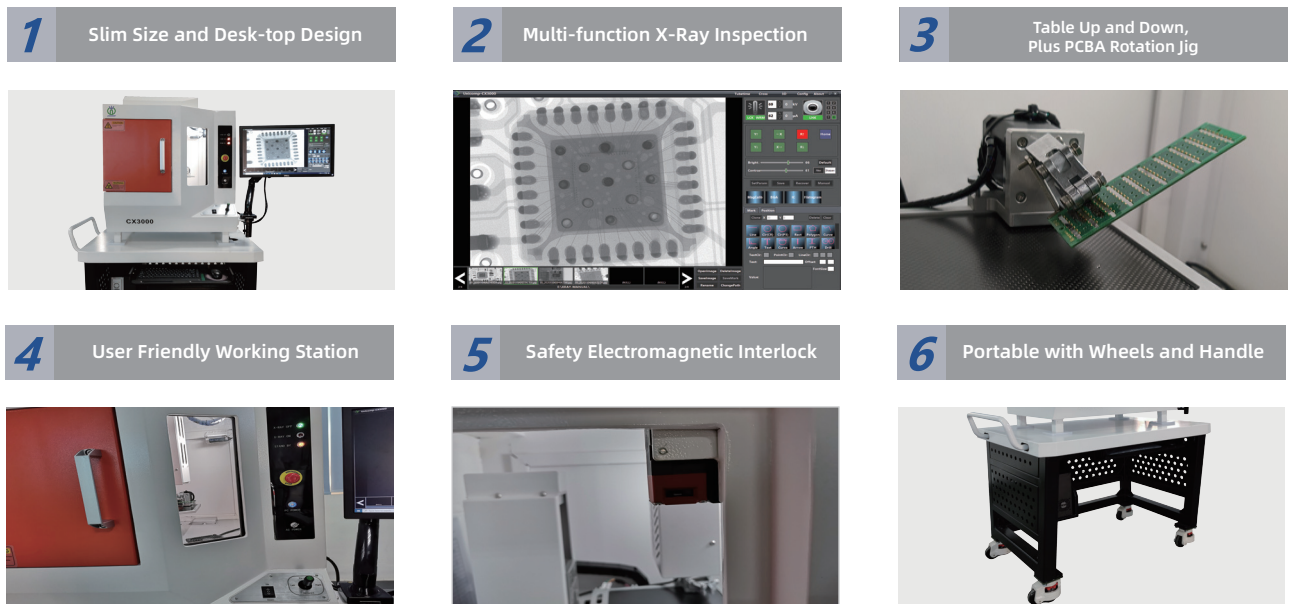
Unicomp Technology

Widely applied for BGA , CSP , Flip Chip, LED , Fuse, Diode, PCB, Semiconductor, Battery Industry, Small Metal Casting, Electronic Connector Module, Cables, Aerospace Components, Photovoltaic Industry, etc.

Application Fields



Functions and Features



Inspection Images





A Leader in the Intelligent X-Ray Inspection Equipment

Technical Parameters and Specifications

System Summary

Footprint	1480(W)×750(D)×1680(H)mm	Plywood Packing Size	150(W)×115(D)×115(H)cm
Machine Weight	300 kg	Packing Weight	400 kg
Power Supply	AC 110~220V, 50/60Hz	Power Consumption	1.0 kW

X-Ray Tube

Tube Type	Sealed	Max. Power	8W
Voltage	0~90kV (Adjustable)	Focus Spot Size	5µm

Imaging System

Detector	Flat Panel Detector (FPD)	Pixel Size	49.5µm
Effective Detection Area	50*50mm	Frame Rates	30fps
Pixel Matrix	1172*1100	System Magnification	200X

Software

Auto-measuring	BGA Soldering Voids Auto-measuring and Support Data/Graphic Output
Multiple Measuring Tools	Support Measuring Distance, Angle, Diameter, Polygon, PTH filling rate, etc.
Real-time Display	Real-time Displaying the Working Data of Voltage, Current, Angle, Date, etc
Navigation	Navigation in Visual Windows
User Friendly	Easy Operation and User Friendly

Motion Control System

Movement Control	Joystick, Keypad & Mouse
Max. Loading Area/Weight	235*205mm /5kg
Max. Inspection Area	190*165mm
Tilting Angle	±360°
Manipulator	3-axis with X / Y / Z

Industrial PC

Monitor	22" FHD LCD Display
System OS	Windows 10 64bit
Hard disk	1TB
RAM	8GB
CPU model	Intel i7 Processor

Other Features

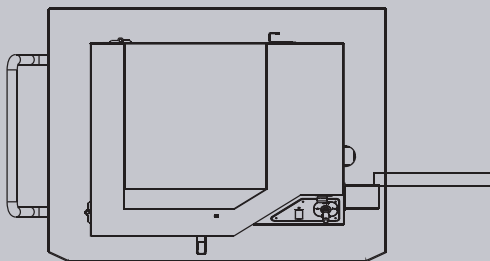
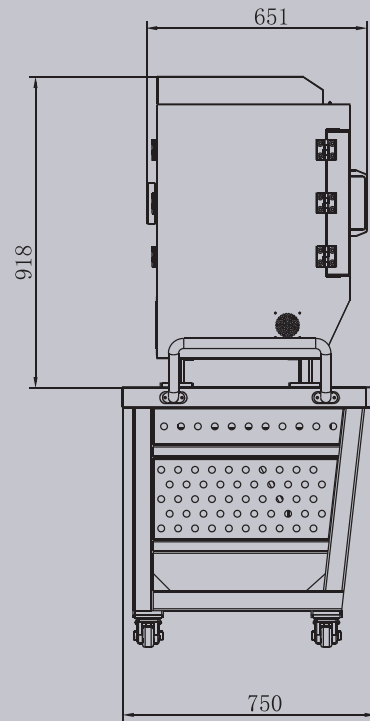
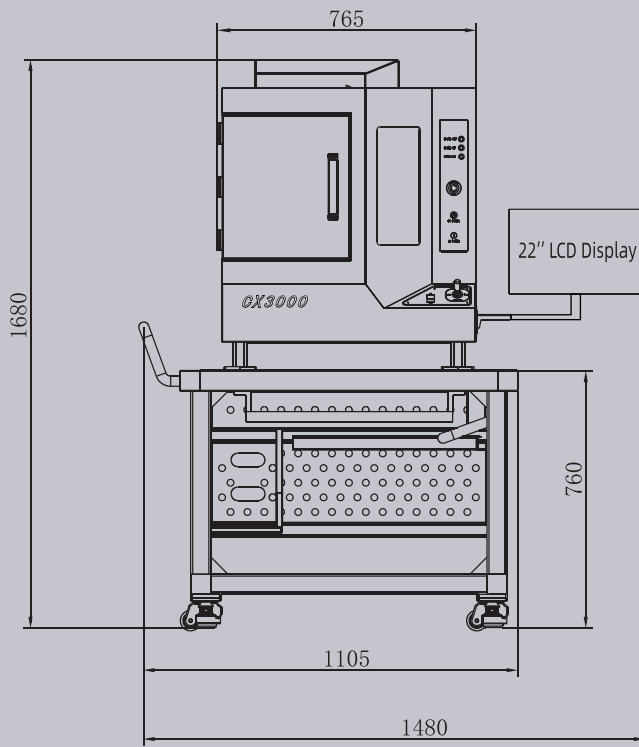
Energy Saving	X-Ray Auto-off when it's out of work over than 5 minutes	Safety Operation	Electromagnetic Interlock and Warning Light
Authority Management	Password Management	X-Ray Safety	<1µSv/h (Meets All International Standards)

* Specifications are subject to change without notice, All trademarks are the property of the system maker.

Dimensions and Appearance



Scan the QR-Code to visit more information





CX7000L X-Ray

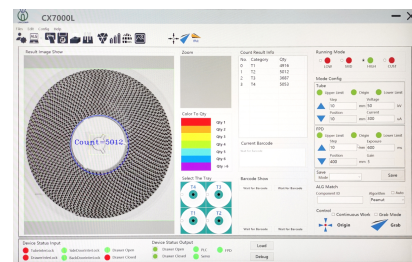
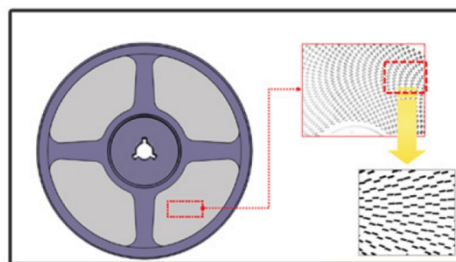
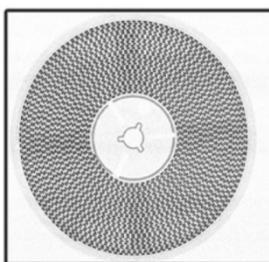
SMD Chip Counter

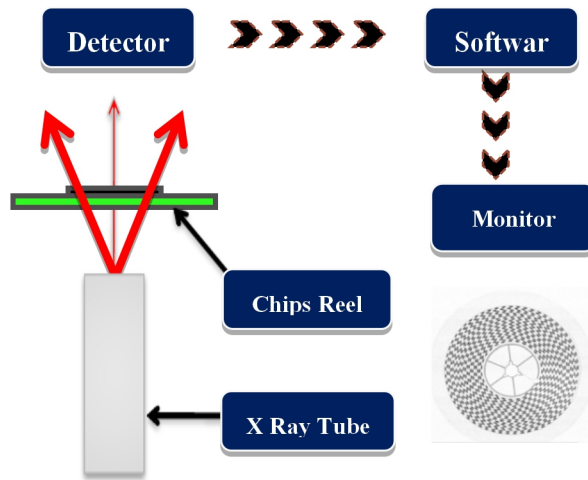


Features

- Automatic inspection, no need on programs switch for different components
- Fast speed and high accurate chip counting, reducing labor costs
- No chip damage or lost with non-destructive counting
- Compatible with 7"~17" tape & reels
- Automatic link with ERP & MES System, and storage system
- Shielded cabinet protection to guarantee Safety leakage of X-ray
- Fast counting Speed: 12~13s/Reel
- Inspection Accuracy: $\geq 99.9\%$
- Min. Package: 01005
- One-button operation, automatic counting
- Hand-operated label reading, new label printing and sticking
- Special advantage for incoming inspection and inventory management
- Real-time radiation leakage monitoring

X-ray Images





Main Configuration

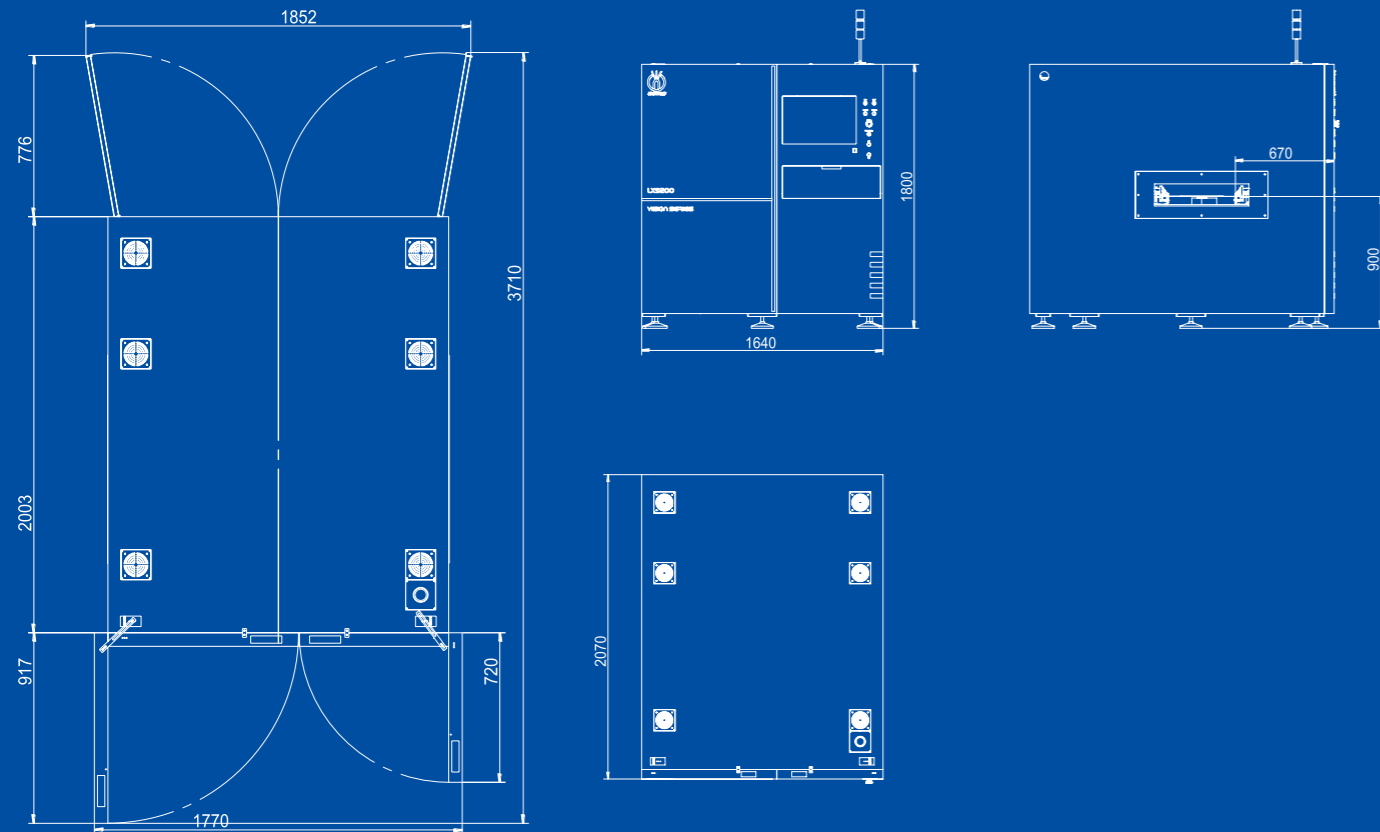
1. Bar-code Scanner
2. X-ray System
3. Label Printer
4. Finger Printer Recognition System

Technical Specifications

Equipment Features	Footprint (W*D*H) / Machine Weight	1000 mm*1370 mm*1962 mm / 1160 kg
	Package	Plywood Case, 110 cm*145 cm*210 cm, Total 1450 kg
	Power Consumption	1.1 kW
	Power Supply	AC 110~220V (±10%) 50Hz
	Working Mode	Off-line
System Computer	Operating System	Industrial PC, Windows OS , i7 CPU
	Monitor	22" LCD
X-Ray Tube	Max. Voltage	80 kV
	Max. Current	700 μA
	Focal Spot Size	0.03 mm
Detector	FPD Detector Pixel Size	139 μm
	Effective Detection Area	430*430 mm
	Pixel Matrix	3072*3072
	Frame Rates / AD Bits	14 fps / 16 Bits
Detection Parameters	Inspection Tape & Real Size	7"~17"
	Scan height	≤88mm
	Maximum Inspection Speed	7"~17" Tape & Real is less than 12s/Real, 7"*4 is less than 13s.
	Inspection Min. Component	01005
	Inspection Accuracy	≥99.9%
Detectable item	Capacitors, resistors, inductors, beads, crystals, transistors, diodes, FETs, various types of resistors, bile capacitors, detectable connectors, integrated circuit chips, etc.	
Accessories	Barcode Scanning, Printer, Fingerprint Recognition System,	

X-Ray Safety: All X-ray machines manufactured by Unicomp Technology meet the FDA-CDRH Regulation CFR 21 1020.40 Subchapter J for cabinet x-ray systems. The FDA - CDRH standard for cabinet x-ray systems states that radiation emission will not exceed. 5millirem a /hr.2"from any external surface. Our machines (**Leakage <1μSv/h**) are typically 5-10 times less than the international standards,

■ Specifications are subject to change without notice, all trademarks are the property of the system maker.



**All in One
2D / 2.5D / 3D CT**



X-Ray Inline
Automatic Inspection

Application Field

SMT/PCBA

Package type: BGA, LGA, CSP, POP, SIP...

Defect type: Void, HIP, Insufficient, Bridge...

Other areas

Battery, IGBT...

Semiconductor

Package type: W/B, IC, F/C...

Defect type: Void, Open, Short, Sweep, Solder ball...

Function Features

- ① Closed Micro-focus X-Ray tube
- ② HD FPD Detector
- ③ Real-time image
- ④ Multiple resolution selected
- ⑤ High speed shooting on the fly
- ⑥ 360° circular CT image
- ⑦ Modular design and extensible

Technical Parameters and Specifications

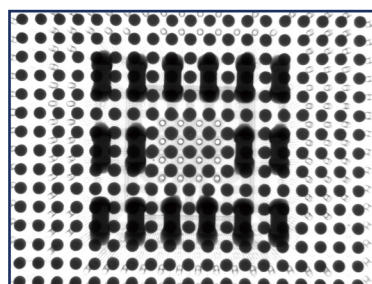
System Parameters

Footprint Size	1640(W)*2070(D)*1800(H)mm	Machine Weight	3330kg
Packing Size	1750(W)*2200(D)*2000(H)mm	Packing Weight	3570kg
Power Supply	AC 110/220V, 50/60Hz	Power	4.2 kW
X-Ray Leakage	< 0.5μSv/h		

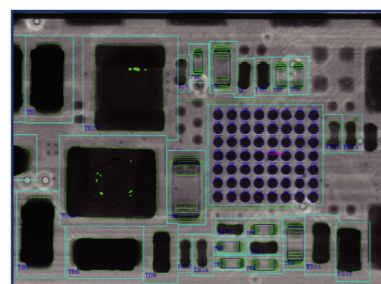
Imaging System

X-Ray Tube Type	Closed	Max. Voltage	130kV
Detector	FPD	Image Acquisition	2D/2.5D/3D

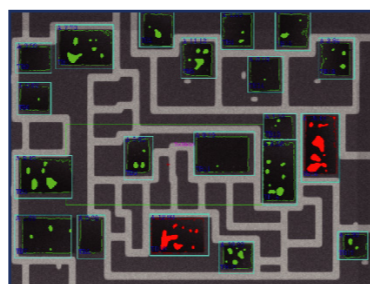
Inspection Images



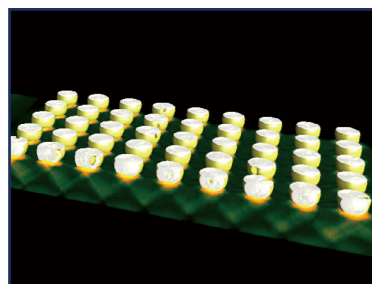
2D-BGA



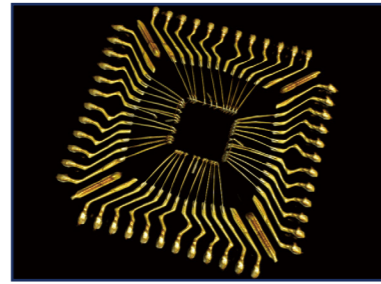
AXI-PCBA



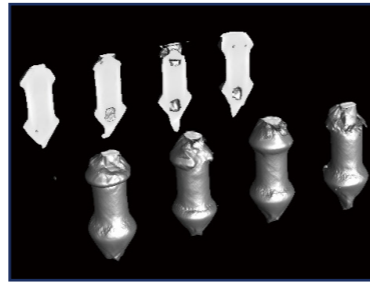
AXI-IGBT



CT-BGA



CT-IC



CT-DIP

Inspection Area

Max. Inspection Area (2D Type)	510*730mm	Max. Inspection Area (3D & 2.5D Type)	510*670mm
PCB Load	5kg [M size] 30kg [L size]	PCBA thickness	0.5~5mm
PCBA Craft side	5mm	PCBA warpage compensation	±2mm
Clearance Top	70mm	Clearance Bottom	40mm